

**ROWLAND**  
UNIFIED SCHOOL DISTRICT



# Monthly Status Report

*Nogales High School Revival Project*



Job No. 1537

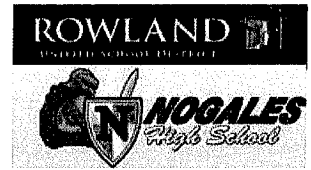
*June 2014*



401 S. Nogales St.

La Puente, CA 91744



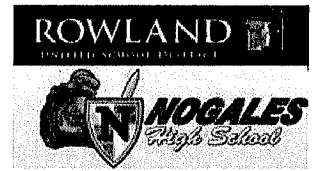


**MONTHLY STATUS REPORT** **JUNE 2014**

- 1. Executive Summary..... 2**
  - 1.1. Overview ..... 2
  - 1.2. Summary of Progress ..... 3
- 2. Schedule ..... 3**
  - 2.1. Overview ..... 7
  - 2.2. Project Schedule Status ..... 7
- 3. Financial Information..... 7**
  - 3.1. Overview ..... 7
  - 3.2. Change Orders & Potential Change Orders ..... 8
  - 3.3. Applications for Payment Summary ..... 9
- 4. Design Status..... 9**
  - 4.1. Overview ..... 9
  - 4.2. Submittals ..... 9
  - 4.3. Requests for Information (RFI) ..... 9
  - 4.4. Architect's Directives ..... 10
- 5. Issues, Disputes, Claims & Safety ..... 10**
  - 5.1. Issues ..... 10
  - 5.2. Disputes ..... 11
  - 5.3. Claims ..... 11
  - 5.4. Safety ..... 11
- 6. Miscellaneous..... 11**
  - 6.1. Project Logs ..... 11

# Rowland Unified School District

## Nogales High School Revival Project



### 1. Executive Summary

#### 1.1. Overview

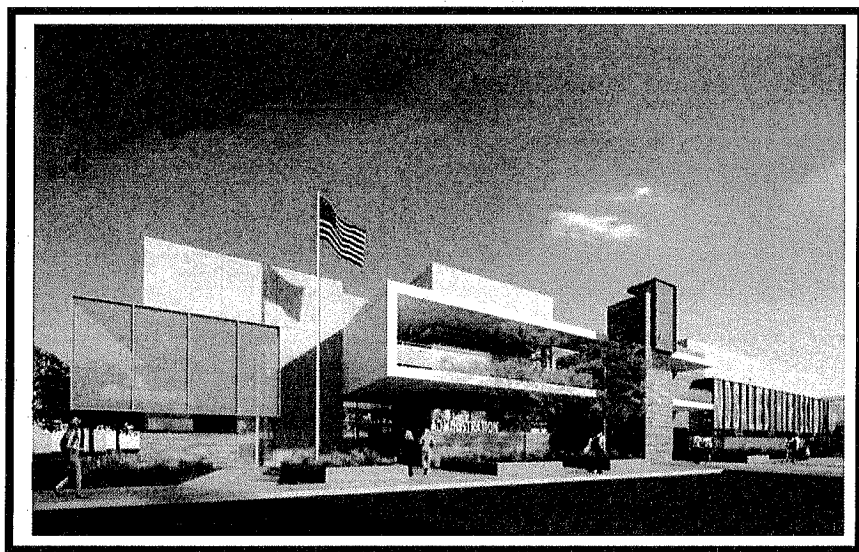
The Revival Project at Nogales High School encompasses two separate drawing packages prepared by HMC Architects. The Campus Revival is under the jurisdiction of the Department of State Architect (DSA), while the Box Culvert is overseen by the LA County Flood Control District.

The Campus Revival package consists of the remediation and demolition of several existing buildings and the new construction of four buildings along with transit shelters, landscaping, site improvements and a new parking lot. New buildings include a 2-story Administration building with classrooms on the second floor, a 2-story Classroom building, a 1-story Multi-Purpose facility with indoor/outdoor stage, a 1-story Food Services building and 1-story Maintenance and Operations building. A total of 24 new classrooms are being added.

The Box Culvert package consists of the complete removal, re-routing and reconnection of the existing County box culvert storm drain system that crosses the school campus beneath the planned footprint of the new Administration building. The existing culvert will be intercepted in the parking lot and re-routed out onto Northam Street and reconnected at the intersection at Grasmere.

Both packages were bid separately with the Campus Revival package being awarded to Echo Pacific Construction, Inc. in the amount of \$23,615,517, and the Box Culvert package being awarded to Dominguez General Engineering in the amount of \$945,000. HMC Architects, Inc. is the Architect of Record, while Knowland Construction Services is providing DSA required inspection services. Bernards has been contracted to provide Construction Management services.

Board approval for award and construction occurred on November 12, 2013. Notices to Proceed for both packages were issued on December 3, 2013 to Echo Pacific and Dominguez General Engineering. The two packages will be constructed in tandem and the overall project is scheduled for substantial completion in time to occupy for the start of the 2015 Fall Term, with final project completion by December 18, 2015.



**1.2. Summary of Progress**

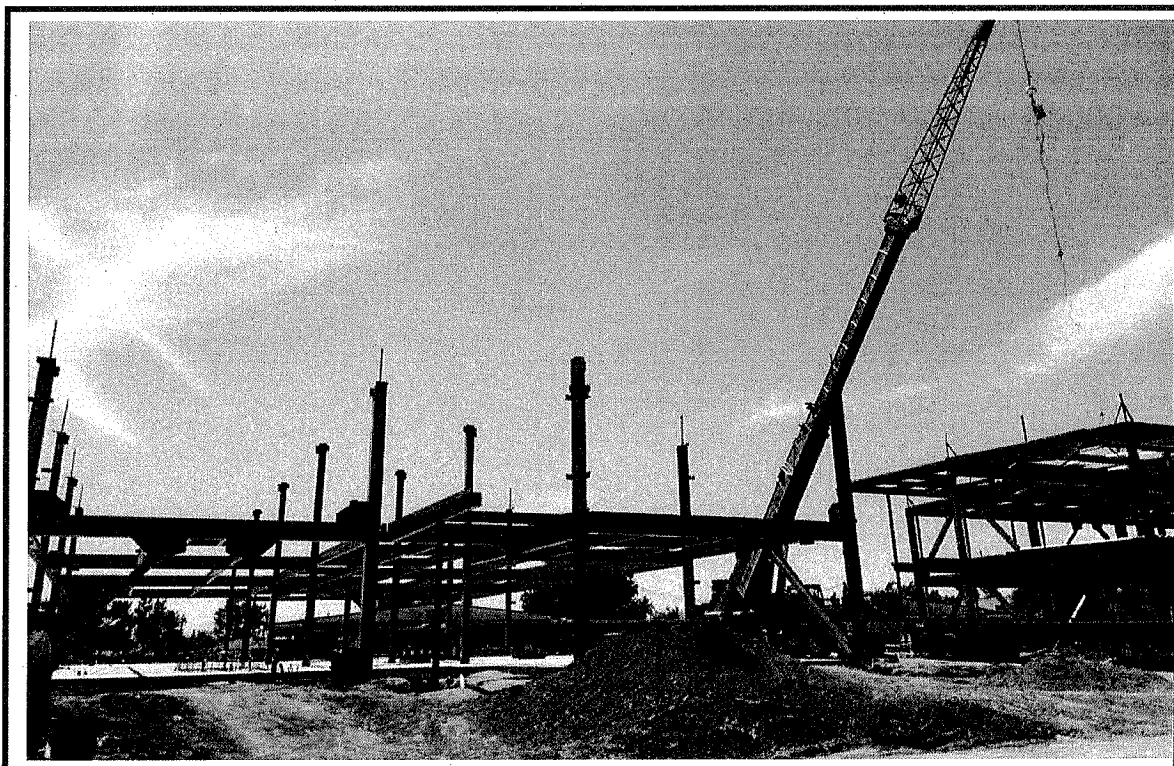
**1.2.1. Campus Revival –**

**Phase 1** – During the month of June, much of the work has continued to focus on the erection of structural steel on buildings A & B and the underground electrical infrastructure for the campus. The installation of the new Edison Switchgear is scheduled to begin installation on 7/7/14. Main power to the campus will be down during the switch-over which is anticipated to take three weeks. A generator has been brought in to provide power to support scheduled activities at the pool and gymnasium.

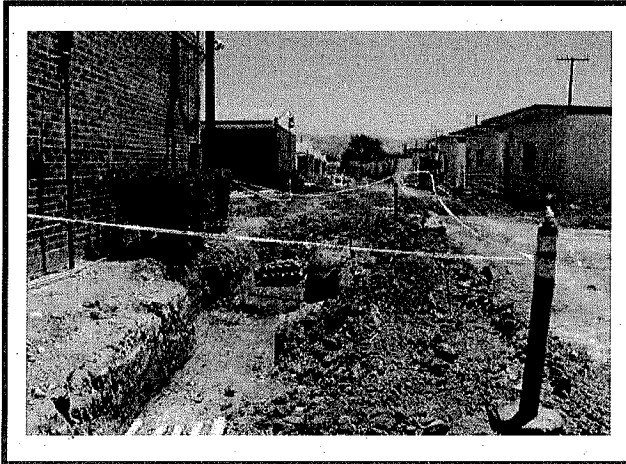
Building A Structural Steel erection is 50% complete. Building B Steel erection is 95% complete and welding is ongoing. Installation of metal deck on Bldg B is 50% complete. Scaffolding erection is complete and will enable multiple trades to enter the second floor safely in order to complete their work. Building C exterior stage is in process of being built out and the concrete pad continues to cure while we wait for structural steel to arrive. Building D footings are poured and under-slab utilities are being installed for a scheduled concrete pour on July 11<sup>th</sup>. The soon-to-be bus drop off area along Northam St. has been rough graded and underground utilities are re being installed.

**1.2.2. Box Culvert –**

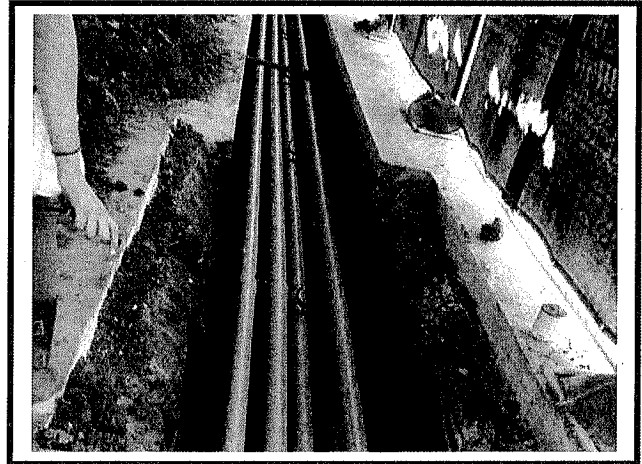
The box culvert project was substantially completed in April. We are currently in the close-out stage and awaiting final paperwork from Dominguez Engineering and the LACPW division prior to issuing NOC. Board approval of NOC is expected at August session.



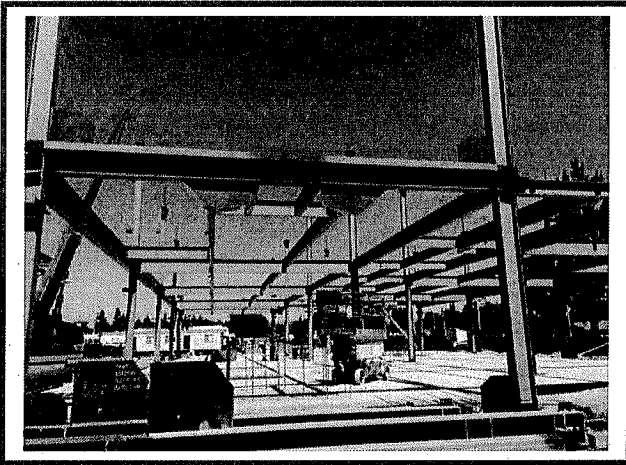
**Buildings A & B Steel Erection**



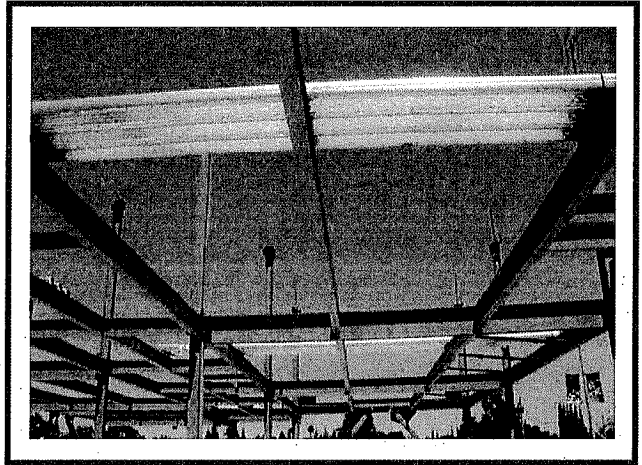
**Underground Electrical**



**Underground Electrical**



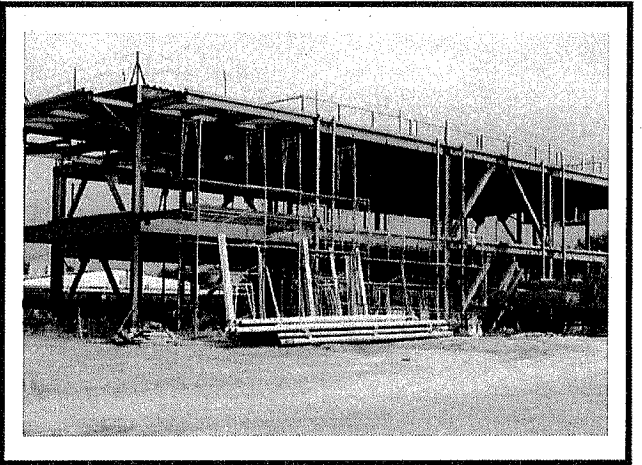
**Building A Structural Steel**



**Bldg A Metal Deck Placement**

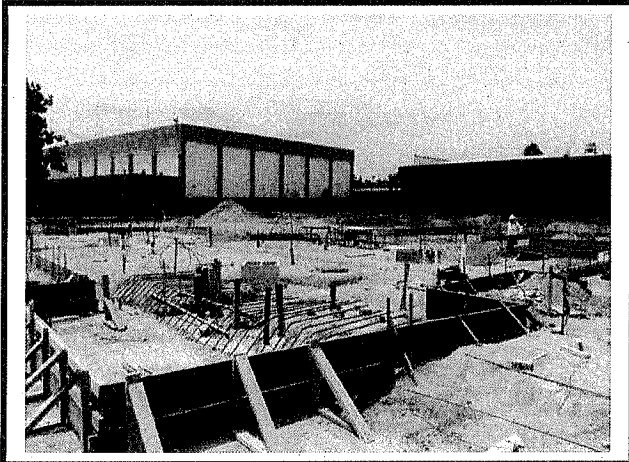


**Bldg D Footings**

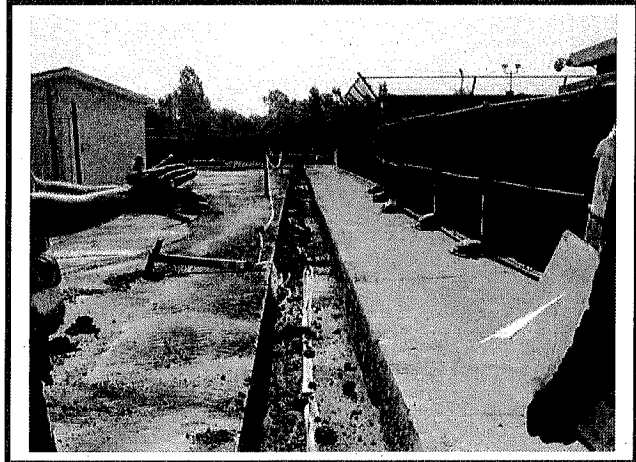


**Bldg B Scaffolding**

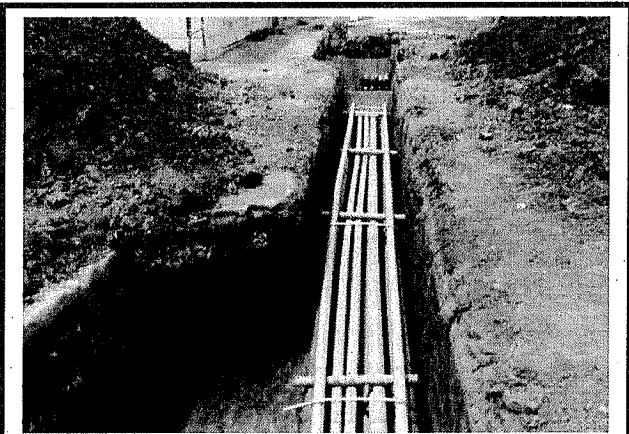
**Rowland Unified School District**  
**Nogales High School Revival Project**



**Bldg D Slab Form**



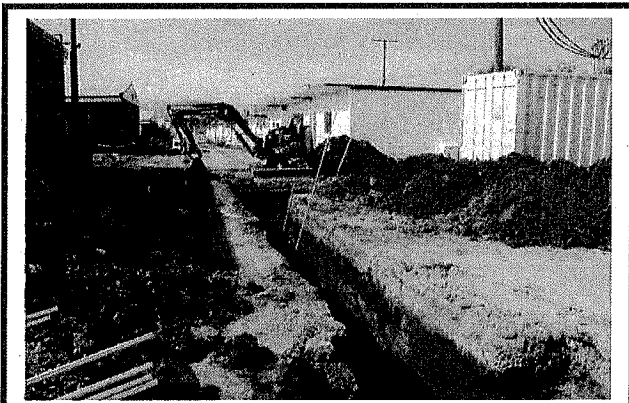
**Underground Electrical**



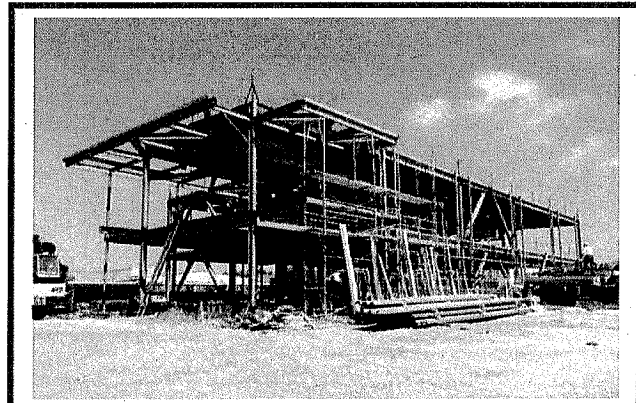
**Underground Electrical**



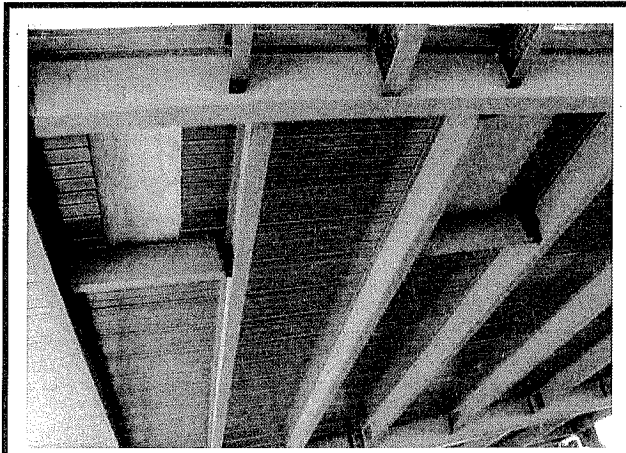
**Underground Electrical**



**Underground Electrical**



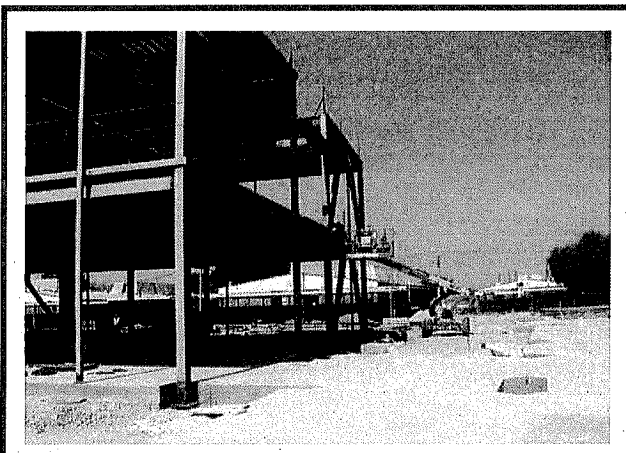
**Bldg B Scaffolding**



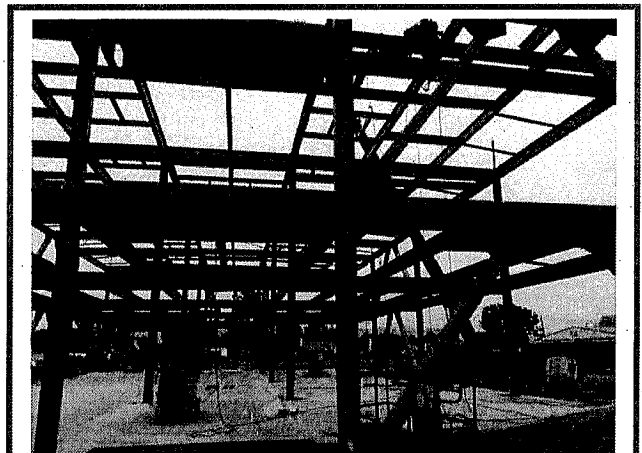
**Metal Deck on Bldg B**



**Metal Deck on Bldg B**



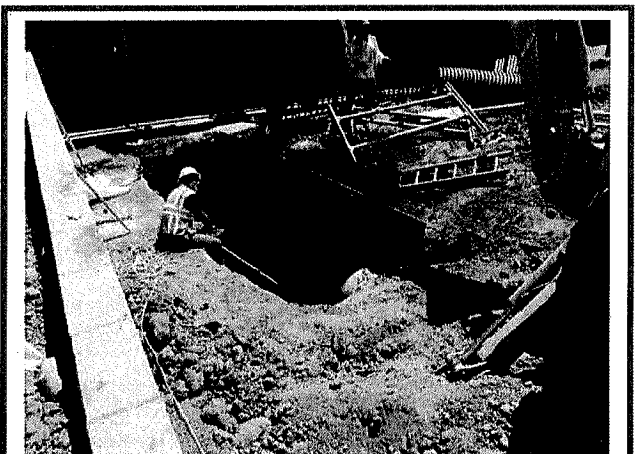
**Building B Welding**



**Building A Steel Erection**



**Bio-Clean Vault Placement**



**Excavation for Bio-Clean Vault**



**2. Schedule**

**2.1. Overview**

The Project is to be executed with multiple milestone dates, as identified and agreed upon by all parties. The project base line construction schedule allows for a five phase, 766 day schedule, with a board approval date of November 12, 2013, a NTP date and physical construction start date of December 3, 2013, a substantial project completion date of October 19, 2015, and a contract completion date of December 18, 2015, complete with all closeout materials submitted.

**2.2. Project Schedule Status**

**Campus Revival –**

Echo Pacific’s Base Line Construction Schedule was approved with corrections on February 13, 2013 by Bernards. Attached is EPC’s update for June month-end. That schedule is showing that Phase 1 (the four main buildings) is running three months behind schedule. Currently, no impact to key turnover dates is anticipated, but schedule float has been minimized. EPC has attributed seven of these weeks to impacts due to the unforeseen condition created by the poor soils and need to import/export. The project team is working to re-baseline the schedule to acknowledge these delays yet still meet the required turnover dates to the District.

**Box Culvert –**

Dominguez General Engineering’s Base Line Construction Schedule Draft was submitted on January 20, 2014 and deemed to conform to contract requirements. However, due to a one month delay in receipt of County approved drawings and permits, this schedule did their efforts through OT and weekend work in order to complete these key milestones by the end of March, 2013. Dominguez met that schedule and supported those milestones. Project is now in the punch-list and closeout phase.

**3. Financial Information**

**3.1. Overview**

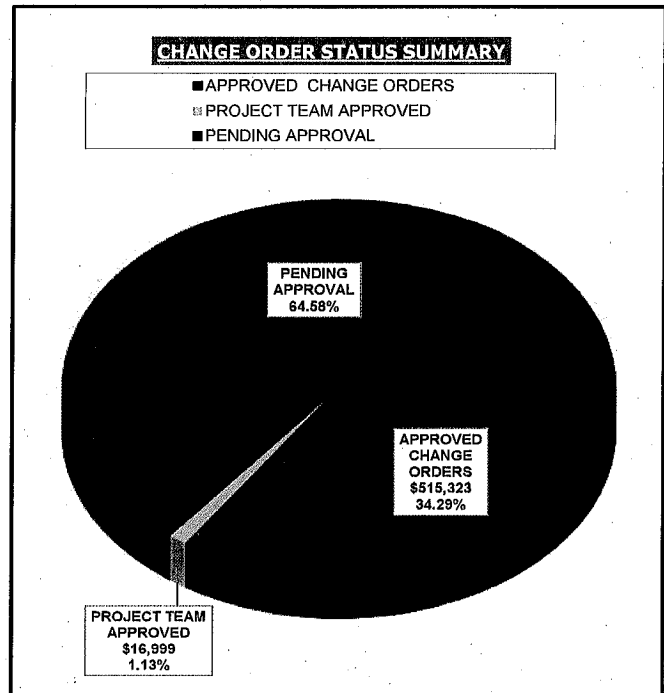
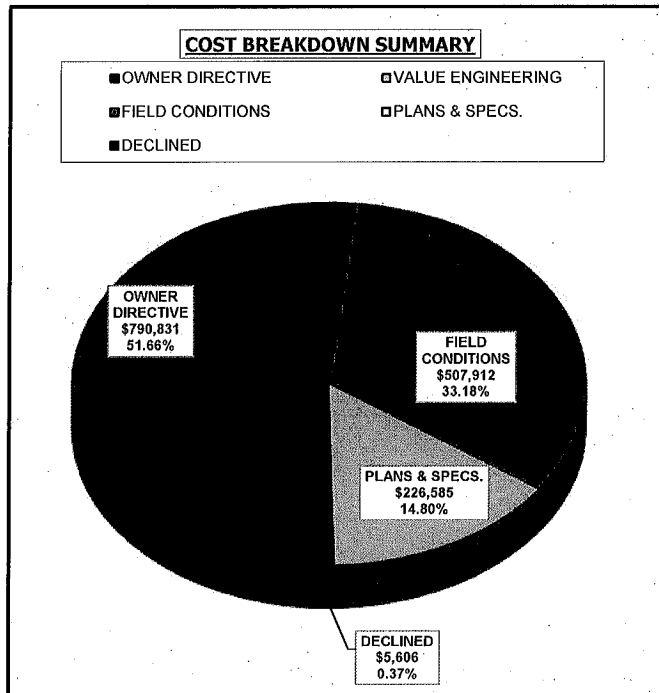
The original Project Construction Contract amount is **\$24,560,517** for both projects combined. The budget is broken down into 2 packages. Package “A” Nogales High School Campus Revival has a value of **\$23,615,517**. Package “B” Nogales High School Box Culvert has a value of **\$945,000**. The current projected contract amount for package ‘A’ is **\$25,140,845** and the current Final contract amounts for package ‘B’ is **\$1,039,192**, for a total contract value of **\$26,180,037**.

Current projected construction costs are as follows:

**Package “A” – Campus Revival**

General Contractor	Commitment	District Approved Change Orders	Percent Change	Current Contract Amount	Project Team Approved Change Orders	Pending Cost Issues	Projected Contract Amount	Projected CO %	Billed To Date - Including Retention	Percent Complete
Echo Pacific Construction	\$ 23,615,517	\$ 515,323	2.18%	\$ 24,130,840	\$ 16,999	\$ 970,625	\$ 25,118,464	6.36%	\$ 6,973,712	28.90%
<b>TOTAL</b>	<b>\$ 23,615,517</b>	<b>\$ 515,323</b>	<b>2.18%</b>	<b>\$ 24,130,840</b>	<b>\$ 16,999</b>	<b>\$ 970,625</b>	<b>\$ 25,118,464</b>	<b>6.36%</b>	<b>\$ 6,973,712</b>	<b>28.90%</b>





OWNER DIRECTIVE	VALUE ENGINEERING	FIELD CONDITIONS	PLANS & SPECS.	DECLINED
\$790,831	\$0	\$507,912	\$226,585	\$5,606
<b>TOTAL AMOUNT COST: \$1,525,328.00</b>				

APPROVED CHANGE ORDERS	PROJECT TEAM APPROVED	PENDING APPROVAL
\$515,323	\$16,999	\$970,625
<b>TOTAL CO PENDING: \$987,624.00</b>		

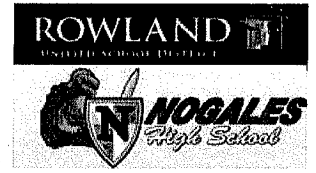
**3.2. Change Orders & Potential Change Orders**

The project team has requested that the general contractor submit Change Order Proposals (COP's) within five days of the issuance of any Field Change Directive, Field Directive or Request for Information (RFI) having an associated cost. See attached Package Cost logs and graphs for detail summaries and breakdowns.

**Package "A"**

Total District Approved Change Order Amount to date equals **\$512,323.00** and is **2.17%** of the contract.

To date, **thirty-nine (39)** Potential Change Orders (PCO's) have been received totaling **\$1,525,328**. Of these PCO's, Change Order Proposals (COR's) have been submitted for **twenty-two (22)** of them. A total of **seven (7)** COR's totaling **\$989,841** remain in negotiation. **Three (3)** COP's totaling **\$16,999** have been project team approved and **thirteen (13)** have been District approved. There are **twelve (12)** PCOs out for pricing and **four (4)** are void.



**3.3. Applications for Payment Summary**

A total of **one (1)** Application for Payment were submitted and approved for month-end of **June 2014**. The Package "A" Nogales High School - Campus Revival Application for Payment totaled **\$1,462,841.66**.

Contractor invoiced amounts through **June 2014** are indicated below.

**Package "A"**

Rowland Unified School District: Nogales High School Campus Revival	Construction Contract Amount	District Approved Change Orders	Current Contract Amount	Work in Place (Incl. Retainage)	Percentage of Work Complete
Echo Pacific Construction	\$23,615,517.00	\$515,323.00	\$24,130,840.00	\$6,973,712.01	28.9%
	<b>\$23,615,517.00</b>	<b>\$515,323.00</b>	<b>\$24,130,840.00</b>	<b>\$6,973,712.01</b>	<b>28.9%</b>

**4. Design Status**

**4.1. Overview**

**Package "A" Nogales High School - Campus Revival**  
**DSA Appl. #03-114768**

- Project Drawings and Specifications - received DSA approval on October 1, 2013
- Addenda #1-5 – Issued October 2013 – Combined and sent to DSA as Addendum #1
- DSA Addendum #1 - Pending approval by DSA

**Package "B" Nogales High School - Box Culvert**  
**LACDPW Appl. #PD0254**

- Project Drawings and Specifications - Approved by LACDPW January 6, 2014
- Addenda #1-5 – Approved by LACDPW January 6, 2014

**4.2. Submittals**

A total of **one hundred fifty-two, (91%)**, out of approximately **one hundred sixty-six**, required front-end project submittals have been approved to date. There are **fourteen (14)** under review and **zero (0)** are to be revised & resubmitted.

Prompt review and return of certain Submittals by the Design Team is crucial to the project schedule. Submittals are reviewed and prioritized at the weekly construction meetings.

**4.3. Requests for Information (RFI)**

A total of **one hundred ninety-five (195)** RFIs have been submitted to date, with **thirteen (13)** pending response.

Prompt review and return of RFI's by the Design Team is crucial to the project schedule and is reviewed at the weekly construction meetings.

**4.4. Construction Change Directives**

**Package "A" Nogales High School - Campus Revival**

A total of **eleven (11)** Construction Change Directives have been issued by the Architect with a total of **four (4)** of these Construction Change Directives required submittal to the Department of the State Architect (DSA). Of those submitted to DSA, **two (2)** have been approved.

**5. Issues, Disputes, Claims & Safety**

**5.1. Issues**

- 5.1.1 January 2014:** Soils conditions found on-site after excavating for the new Administration building pad were found to be of poorer quality than boring logs indicated. Soils lab and engineers have provided recommendations to project team and team is evaluating options.

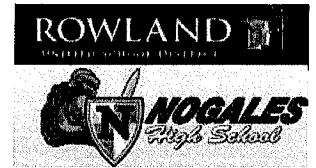
**February 2014:** Unsuitable soil was exported and suitable soil was located from two sources, tested and approved for import. Import of this soil has started.

**March 2014:** Import of suitable soil continued.

**April 2014:** Import/Export operations related to building pads completed.

**June 2014:** T&M CO for this work is in final negotiations. See PCO log.
- 5.1.2 April 2014:** Logistics plan in place with District to keep some program space on campus available throughout summer (gym, pool, band room) with summer school relocated to alternate campus. The existing campus is scheduled to undergo extensive trenching to put in underground utilities to support new feeds from new service locations beginning 6/9. All power to campus is scheduled to be shut down for two weeks beginning July 7, 2014.

**June 2014:** Power conversion on schedule for three week period beginning 7/7. CO for power conversion is in final negotiations. See PCO log.
- 5.1.3 June 2014:** Project team is working on revising the master schedule to adjust milestone completions dates and still meet required District occupancy dates in order to mitigate potential delay claims from EPC. Agreement reached in principal and is expected to be formalized in July.
- 5.1.4 June 2014:** Permits for the bus drop off on Northam have been held up by the County Public Works Department while they review the plans. Delay to Ph. 2 of 6 weeks is anticipated, however, completion of this phase is not critical path to the project.



**5.2. Disputes**

No formal disputes in **June 2014**.

**5.3. Claims**

No formal claims have been received through **June 2014**.

EPC has notified District of a potential delay claim associated with the soils remediation efforts and other unforeseen conditions. At this time no formal claim has been submitted. This issue to be resolved through the adjustment of key milestone dates without impact to cost or scheduled move-in dates.

**5.4. Safety**

Echo Pacific and Dominguez Engineering are conducting weekly Safety Meetings.

**5.4.1 Injuries/Accidents:** No accidents or incidents to report in **June 2014**.

**5.4.2 Safety Violations:** No safety violations to report in **June 2014**.

**5.4.3 SWPPP:** Storm Water Pollution Prevention Plan provisions are in place and being monitored.

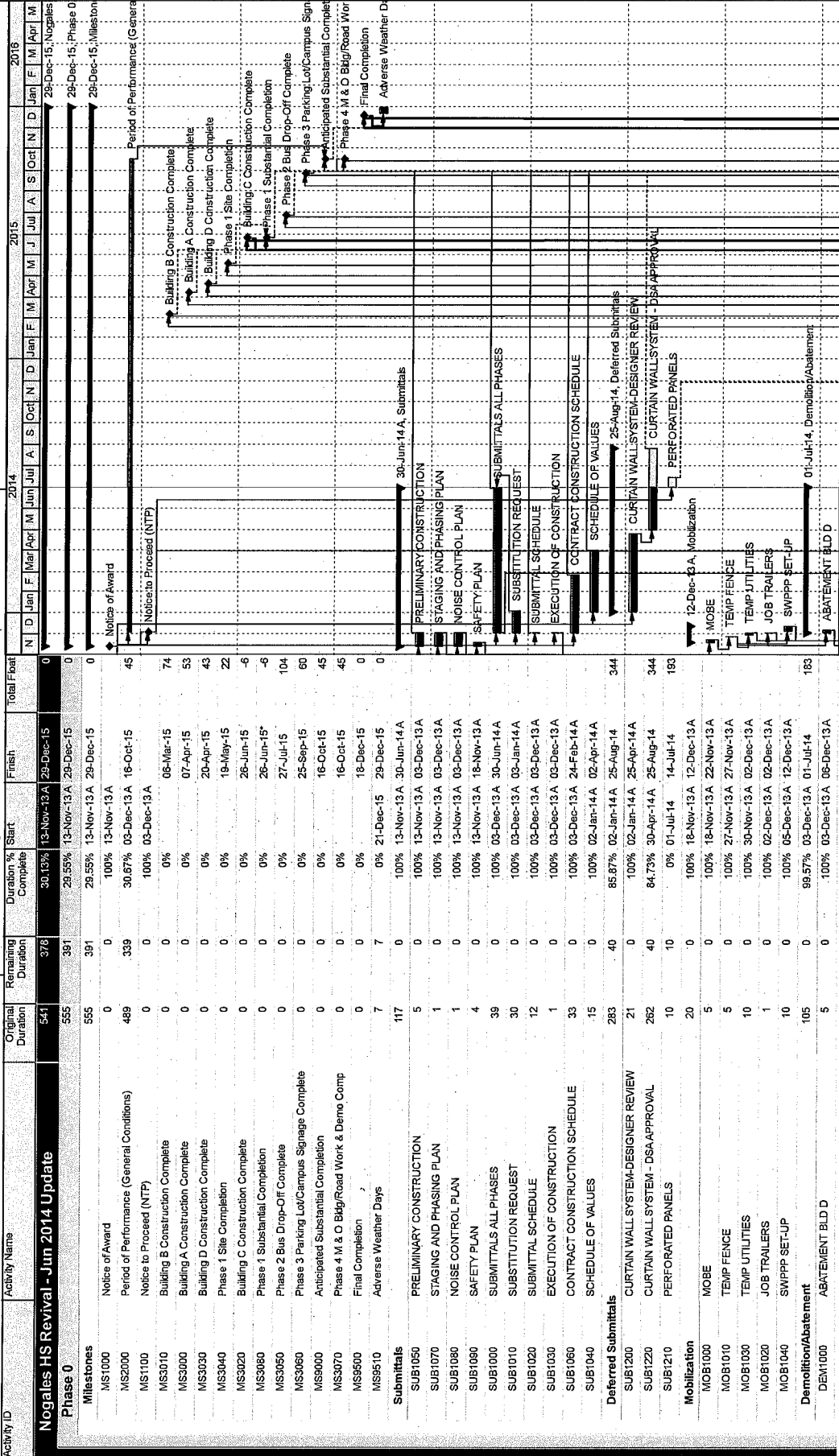
**6. Miscellaneous**

**6.1. Project Logs**

- 6.1.1.** Master Construction Schedule – Package "A"
- 6.1.2.** Three Week Look Ahead Schedule
- 6.1.3.** Potential Change Order (PCO) Log
- 6.1.4.** Master Submittal Package Log
- 6.1.5.** Master Request for Information (RFI) Log
- 6.1.6.** Construction Change Directive Log

Nogales HS Revival - Jun 2014 Update

30-Jun-14 09:10



**Classic Schedule Layout**  
Data Date - 01-Jul-14

Legend:  
 ■ Remaining Level of Effort  
 ■ Actual Level of Effort  
 ■ Critical Remaining Work  
 ■ Actual Work  
 ◆ Milestone

Summary

TASK filter: All Activities

© Oracle Corporation



















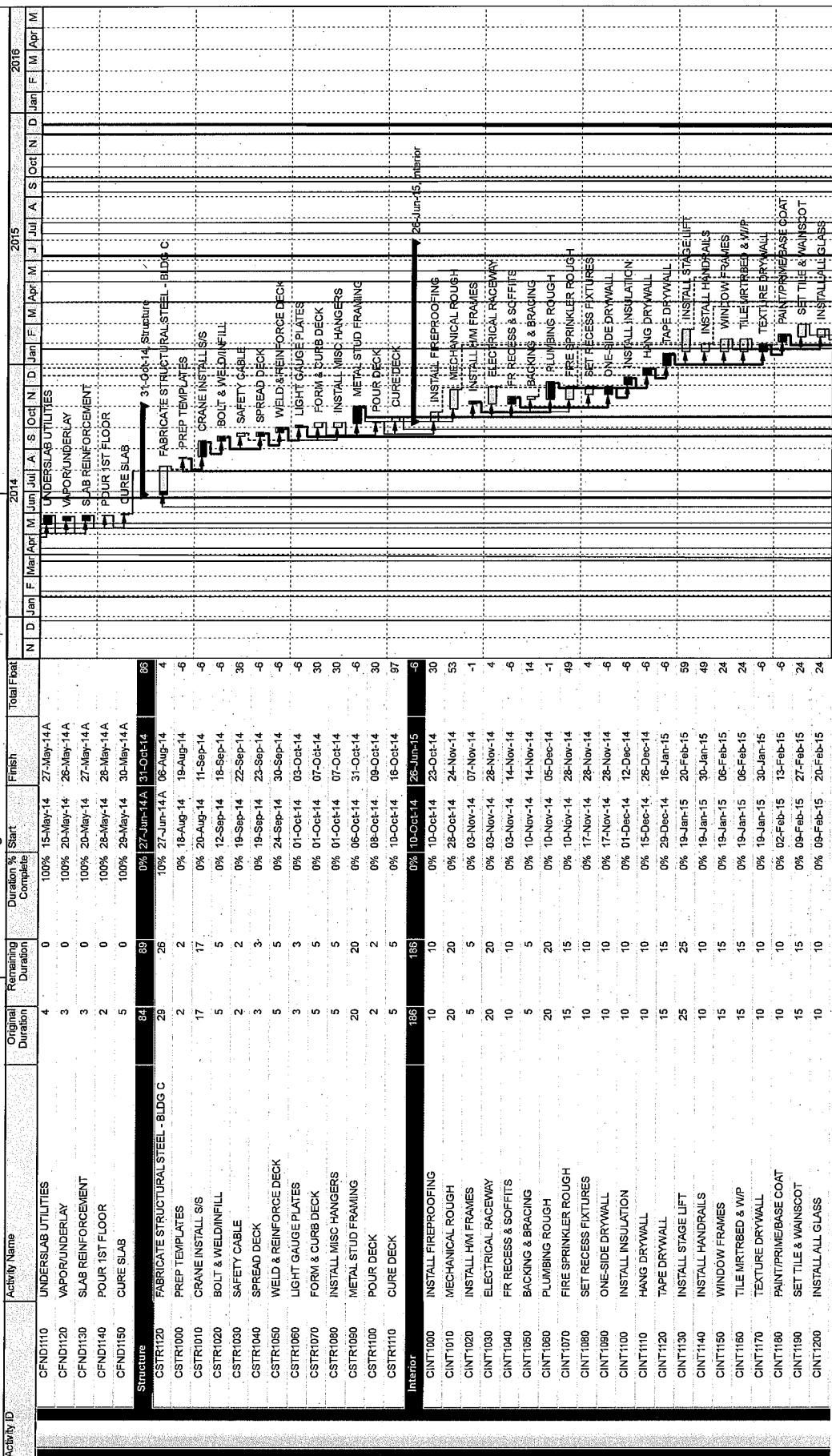








Nogates HS Revival - Jun 2014 Update



TASK filter: All Activities

Classic Schedule Layout

Data Date - 01-Jul-14

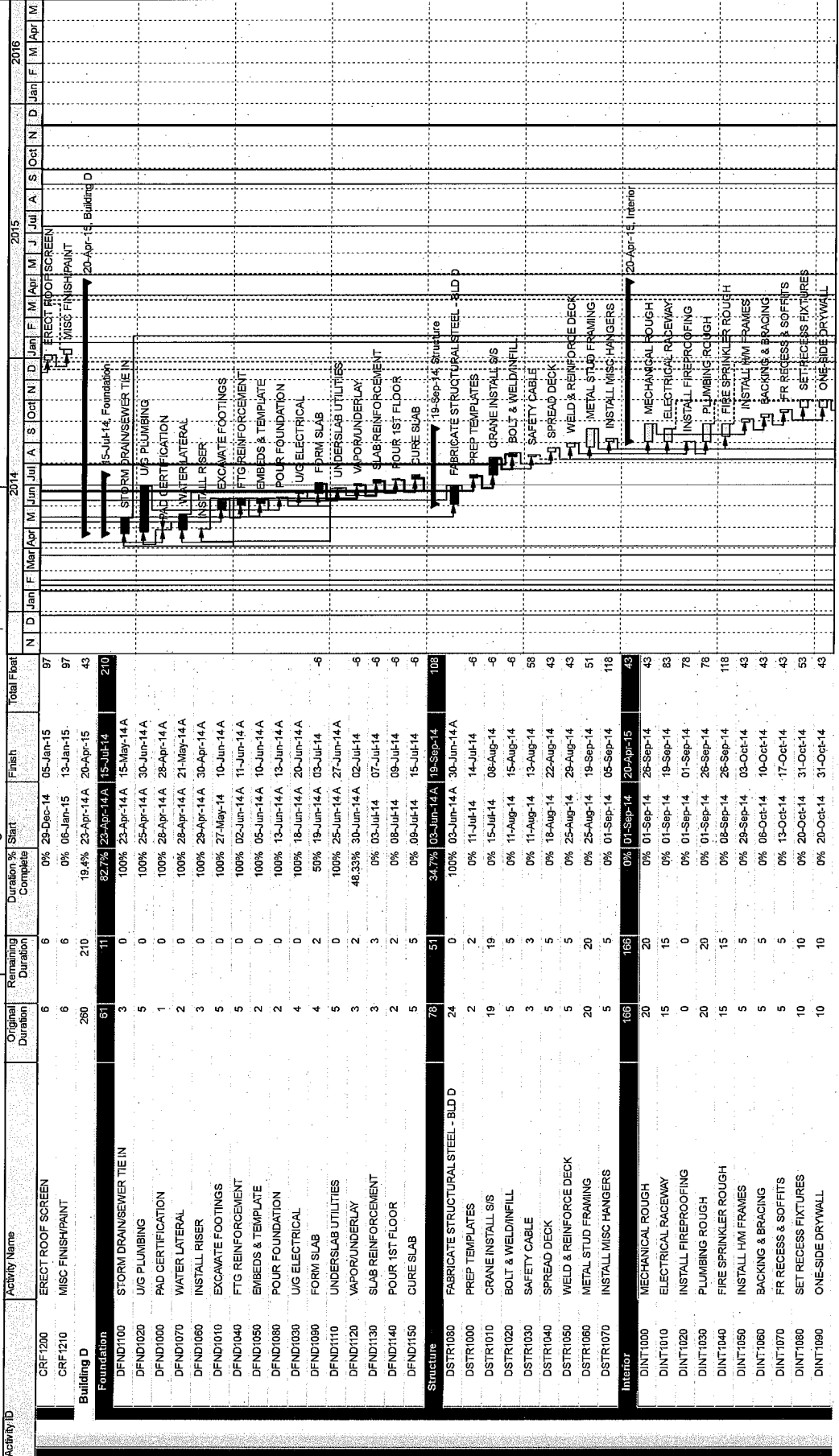
Summary

- Remaining Level of Effort
- Actual Level of Effort
- Actual Work
- Remaining Work
- Critical Remaining Work
- Milestone

© Oracle Corporation







**Classic Schedule Layout**  
 Data Date - 01-Jul-14

TASK filter: All Activities

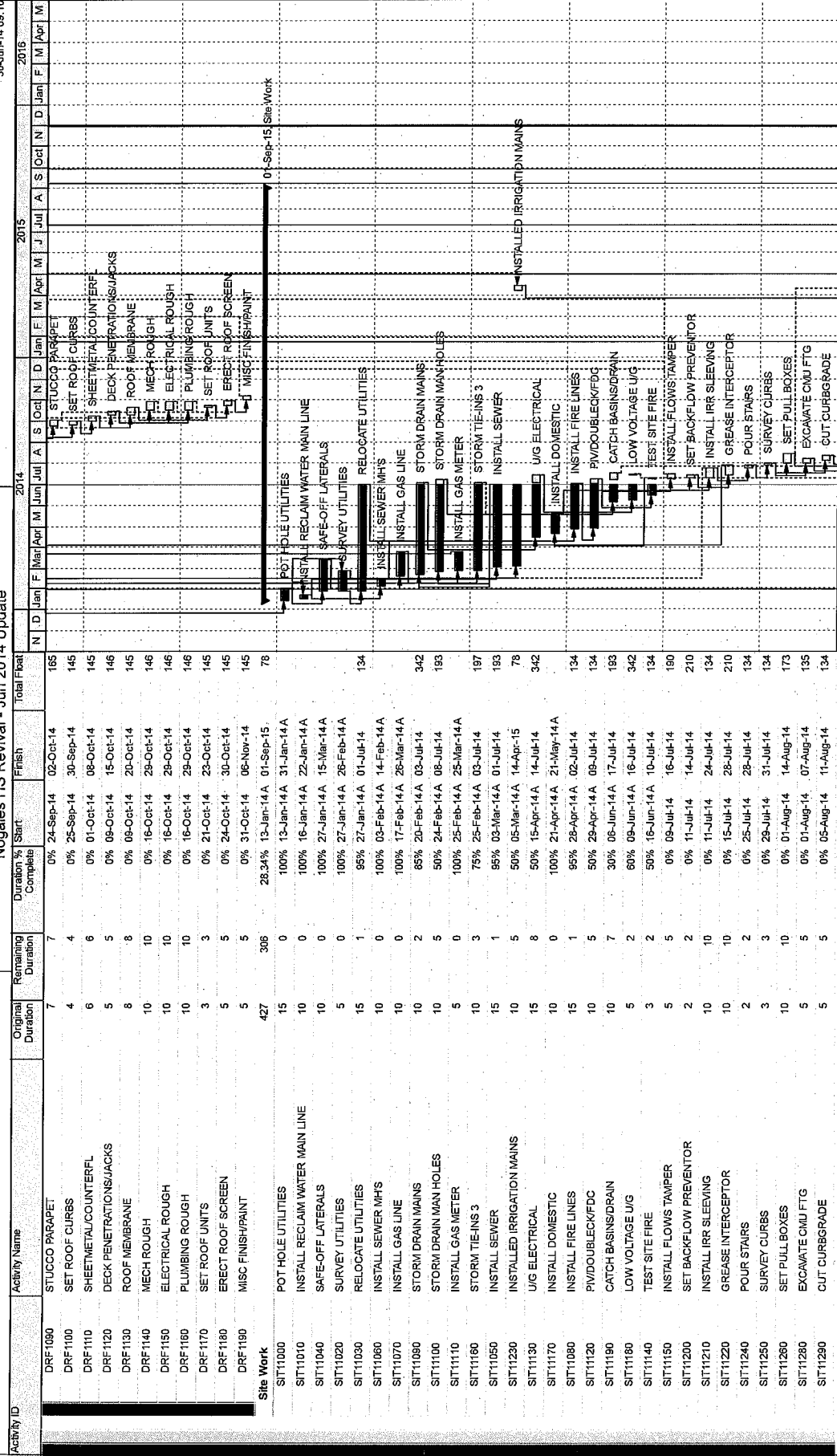
Summary

- Remaining Level of Effort
- Actual Level of Effort
- Actual Work
- Remaining Work
- Critical Remaining Work
- Milestone

© Oracle Corporation







Remaining Level of Effort Remaining Work Actual Level of Effort Critical Remaining Work Actual Work

Summary

Classic Schedule Layout

Task filter: All Activities

Data Date - 01-Jul-14

© Oracle Corporation







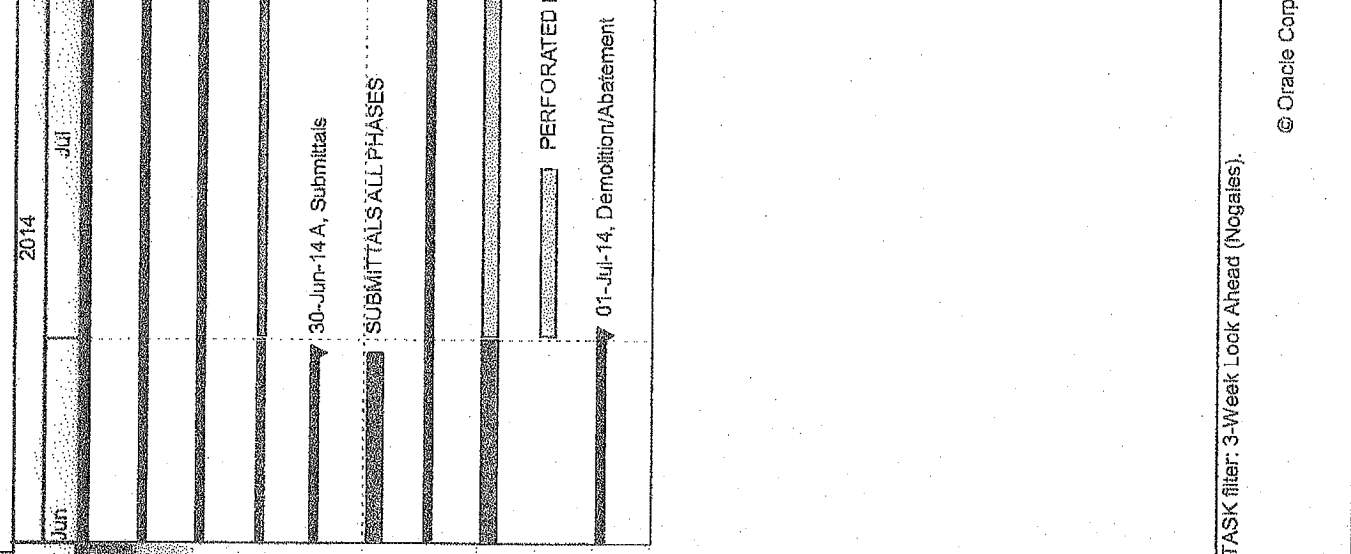




Nogales HS Revival - Jun 2014 Update

01-Jul-14 11:32

Activity ID	Activity Name	Original Duration	Remaining Duration	Duration % Complete	Start	Finish
<b>Nogales HS Revival - Jun 2014 Update</b>						
<b>Phase 0</b>						
<b>Milestones</b>						
MS2000	Period of Performance (General Conditions)	489	339	30.67%	03-Dec-13 A	16-Oct-15
<b>Submittals</b>						
SUB1000	SUBMITTALS ALL PHASES	39	0	100%	03-Dec-13 A	30-Jun-14 A
<b>Deferred Submittals</b>						
SUB1220	CURTAIN WALL SYSTEM - DSA APPROVAL	262	40	84.73%	30-Apr-14 A	25-Aug-14
SUB1210	PERFORATED PANELS	10	10	0%	01-Jul-14	14-Jul-14
<b>Demolition/Abatement</b>						
		3	0	85%	16-Dec-13 A	01-Jul-14



TASK filter: 3-Week Look Ahead (Nogales).

3-Week Look-Ahead

Data Date - 01-Jul-14

© Oracle Corporation

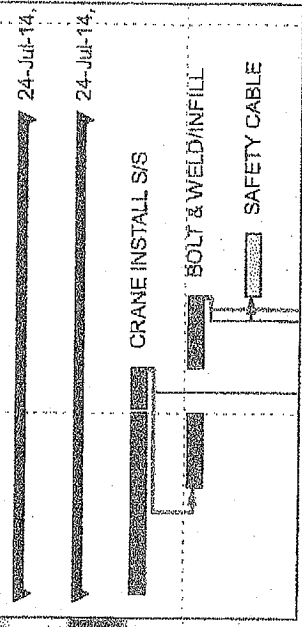
Remaining Level of Effort  
 Actual Level of Effort  
 Actual Work  
 Remaining W...  
 Critical Rema...  
 Baseline Mile...

NHS

Nogales HS Revival - Jun 2014 Update

01-Jul-14 11:32

Activity ID	Activity Name	Original Duration	Remaining Duration	Duration % Complete	Start	Finish
DEM1100	DEMO CANOPIES	3	0	85%	16-Dec-13 A	01-Jul-14
<p>DEMO CANOPIES 12/23/13 - Unable to complete demo of canopies due to data, controls, &amp; fiber infrastructure installed by the CM.</p>						
<p><b>Phase 1</b></p>						
<p><b>Building A</b></p>						
<p><b>Structure</b></p>						
ASTR1020	CRANE INSTALL S/S	13	3	75%	16-Jun-14 A	04-Jul-14
ASTR1030	BOLT & WELD/INFILL	5	4	25%	25-Jun-14 A	10-Jul-14
ASTR1040	SAFETY CABLE	3	3	0%	10-Jul-14	15-Jul-14



Remaining Level of Effort  
 Actual Level of Effort  
 Actual Work

Remaining W...  
 Critical Rema...  
 Baseline Mile...

3-Week Look-Ahead

Data Date - 01-Jul-14

TASK filter: 3-Week Look Ahead (Nogales).

© Oracle Corporation

Nogales HS Revival - Jun 2014 Update

01-Jul-14 11:32

Activity ID	Activity Name	Original Duration	Remaining Duration	Duration % Complete	Start	Finish
ASTR1060	SPREAD DECK	5	5	0%	10-Jul-14	17-Jul-14
ASTR1060	WELD & REINFORCE DECK	5	5	0%	17-Jul-14	24-Jul-14
<b>Elevator</b>						
AELV1000	EXCAVATE PIT	1	1	0%	04-Jul-14	07-Jul-14
AELV1010	PIT REINFORCING	5	5	0%	07-Jul-14	14-Jul-14
AELV1020	INSTALL PIT MEP ROUGH	7	7	0%	14-Jul-14	23-Jul-14
<b>Building 5</b>						
<b>Structural</b>						
BSTR1020	BOLT & WELD/INFILL	5	0	100%	27-May-14A	26-Jun-14A
BSTR1030	SPREAD DECK	5	0	100%	09-Jun-14A	27-Jun-14A
BSTR1050	WELD & REINFORCE DECK	5	3	50%	19-Jun-14A	03-Jul-14
BSTR1060	LIGHT GAUGE PLATES	3	3	0%	03-Jul-14	08-Jul-14
BSTR1070	FORM & CURB DECK	5	5	0%	03-Jul-14	10-Jul-14
BSTR1080	INSTALL MISC HANGERS	5	5	0%	03-Jul-14	10-Jul-14
BSTR1090	METAL STUD FRAMING 1ST FL	15	15	0%	09-Jul-14	29-Jul-14
BSTR1100	POUR DECK	2	2	0%	10-Jul-14	14-Jul-14
BSTR1110	CURE DECK	5	5	0%	14-Jul-14	21-Jul-14
<b>Mechanical</b>						
<b>1st Floor</b>						

**3-Week Look-Ahead**

DATA DATE - 01-Jul-14

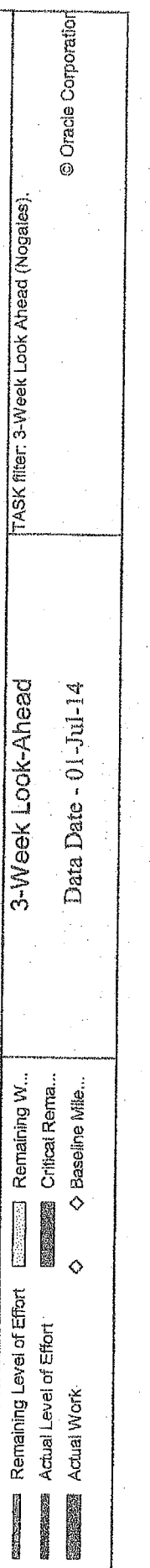
TASK filter: 3-Week Look Ahead (Nogales).

© Oracle Corporation

Nogales HS Revival - Jun 2014 Update

01-Jul-14 11:32

Activity ID	Activity Name	Original Duration	Remaining Duration	Duration % Complete	Start	Finish
BIN11000	MECHANICAL ROUGH	15	15	0%	14-Jul-14	04-Aug-14
BIN11010	ELECTRICAL RACEWAY	15	15	0%	14-Jul-14	04-Aug-14
BIN11020	PLUMBING ROUGH	15	15	0%	14-Jul-14	04-Aug-14
BIN11030	FIRE SPRINKLER ROUGH	15	15	0%	14-Jul-14	04-Aug-14
<b>2nd Floor</b>						
BIN21000	MECHANICAL ROUGH	15	15	0%	21-Jul-14	11-Aug-14
BIN21010	FIRE SPRINKLER ROUGH	15	15	0%	21-Jul-14	11-Aug-14
<b>Roof</b>						
BRF1000	DECKING/SHEETING	10	5	50%	20-Jun-14A	01-Oct-14
BRF1020	WELD & FASTEN ROOF DECK	5	0	100%	25-Jun-14A	30-Jun-14A
BRF1030	INSTALL ROOF DRAINS	7	5	30%	27-Jun-14A	08-Oct-14
<b>Building C</b>						
CFND1070	STORM DRAIN TIE IN	3	1	80%	25-Apr-14A	02-Jul-14
<b>Structure</b>						
CSTR1120	FABRICATE STRUCTURAL STEEL - BLDG C	29	26	10%	27-Jun-14A	06-Aug-14
<b>Building D</b>						
DFND1020	U/G PLUMBING	5	0	100%	25-Apr-14A	30-Jun-14A



TASK filter: 3-Week Look Ahead (Nogales).

3-Week Look-Ahead  
Data Date - 01-Jul-14

- Remaining W...
- Actual Rema...
- Actual Mile...

Nogales HS Revival - Jun 2014 Update

01-Jul-14 11:32

Activity ID	Activity Name	Original Duration	Remaining Duration	Duration % Complete	Start	Finish
DFND1080	FORM SLAB	4	2	50%	18-Jun-14 A	03-Jul-14
DFND1110	UNDERSLAB UTILITIES	5	0	100%	25-Jun-14 A	27-Jun-14 A
DFND1120	VAPOR/UNDERLAY	3	2	48.33%	30-Jun-14 A	02-Jul-14
DFND1130	SLAB REINFORCEMENT	3	3	0%	03-Jul-14	07-Jul-14
DFND1140	POUR 1ST FLOOR	2	2	0%	08-Jul-14	09-Jul-14
DFND1150	CURE SLAB	5	5	0%	09-Jul-14	15-Jul-14
STRUCTURAL STEEL - JUN-AUG-14						
DSTR1080	FABRICATE STRUCTURAL STEEL - BLD D	24	0	100%	03-Jun-14 A	30-Jun-14 A
DSTR1000	PREP TEMPLATES	2	2	0%	11-Jul-14	14-Jul-14
DSTR1010	CRANE INSTALL S/S	19	19	0%	15-Jul-14	08-Aug-14
Site Work						
SIT11030	RELOCATE UTILITIES	15	1	95%	27-Jan-14 A	01-Jul-14
SIT11090	STORM DRAIN MAINS	10	2	85%	20-Feb-14 A	03-Jul-14
SIT11100	STORM DRAIN MAN HOLES	10	5	50%	24-Feb-14 A	08-Jul-14
SIT11160	STORM TIE-INS 3	10	3	75%	25-Feb-14 A	03-Jul-14
SIT11050	INSTALL SEWER	15	1	95%	03-Mar-14 A	01-Jul-14
SIT11230	INSTALLED IRRIGATION MAINS	10	5	50%	05-Mar-14 A	14-Apr-15
SIT11130	U/G ELECTRICAL	15	8	50%	15-Apr-14 A	14-Jul-14
SIT11080	INSTALL FIRE LINES	15	1	95%	28-Apr-14 A	02-Jul-14

TASK filter: 3-Week Look Ahead (Nogales).

**3-Week Look-Ahead**

Data Date - 01-Jul-14

Remaining Level of Effort  
 Actual Level of Effort  
 Actual Work

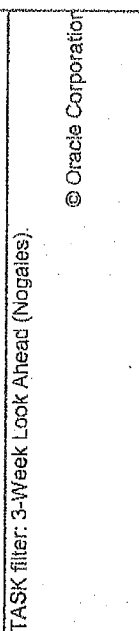
© Oracle Corporation



Nogales HS Revival - Jun 2014 Update

01-Jul-14 11:32

Activity ID	Activity Name	Original Duration	Remaining Duration	Duration % Complete	Start	Finish
SIT11120	PIV/DOUBLECK/FDC	10	5	50%	29-Apr-14 A	09-Jul-14
SIT11190	CATCH BASINS/DRAIN	10	7	30%	06-Jun-14 A	17-Jul-14
SIT11180	LOW VOLTAGE U/G	5	2	60%	09-Jun-14 A	16-Jul-14
SIT11140	TEST SITE FIRE	3	2	50%	16-Jun-14 A	10-Jul-14
SIT11150	INSTALL FLOWS TAMPER	5	5	0%	09-Jul-14	16-Jul-14
SIT11200	SET BACKFLOW PREVENTOR	2	2	0%	11-Jul-14	14-Jul-14
SIT11210	INSTALL IRR SLEEVING	10	10	0%	11-Jul-14	24-Jul-14
SIT11220	GREASE INTERCEPTOR	10	10	0%	15-Jul-14	28-Jul-14
<b>Phase 2</b>		<b>329</b>	<b>274</b>	<b>16.59%</b>	<b>17-Feb-14 A</b>	<b>17-Jul-15</b>
<b>Site Utilities &amp; Drop Off</b>		<b>329</b>	<b>274</b>	<b>16.59%</b>	<b>17-Feb-14 A</b>	<b>17-Jul-15</b>
PH21000	INSTALL SEWER	10	1	90%	17-Feb-14 A	01-Jul-14
PH21030	INSTALL STORMDRAIN	10	1	95%	07-Apr-14 A	02-Jul-14
PH21040	INSTALL FIRELINE	5	1	90%	22-Apr-14 A	02-Jul-14
PH21010	DEMO FOR EXCAVATION	5	1	90%	21-May-14 A	01-Jul-14
PH21020	EXCAVATIONS	15	2	90%	06-Jun-14 A	02-Jul-14
PH21050	INSTALL RACEWAY U/G	10	10	0%	03-Jul-14	16-Jul-14
PH21060	EXCAVATE CANOPY FOUNDATIONS	3	3	0%	03-Jul-14	07-Jul-14
PH21070	INSTALL IRRIGATION SYSTEM	10	10	0%	03-Jul-14	16-Jul-14
PH21290	OFFSITE WORK/IMPROVEMENTS	262	262	0%	07-Jul-14	17-Jul-15



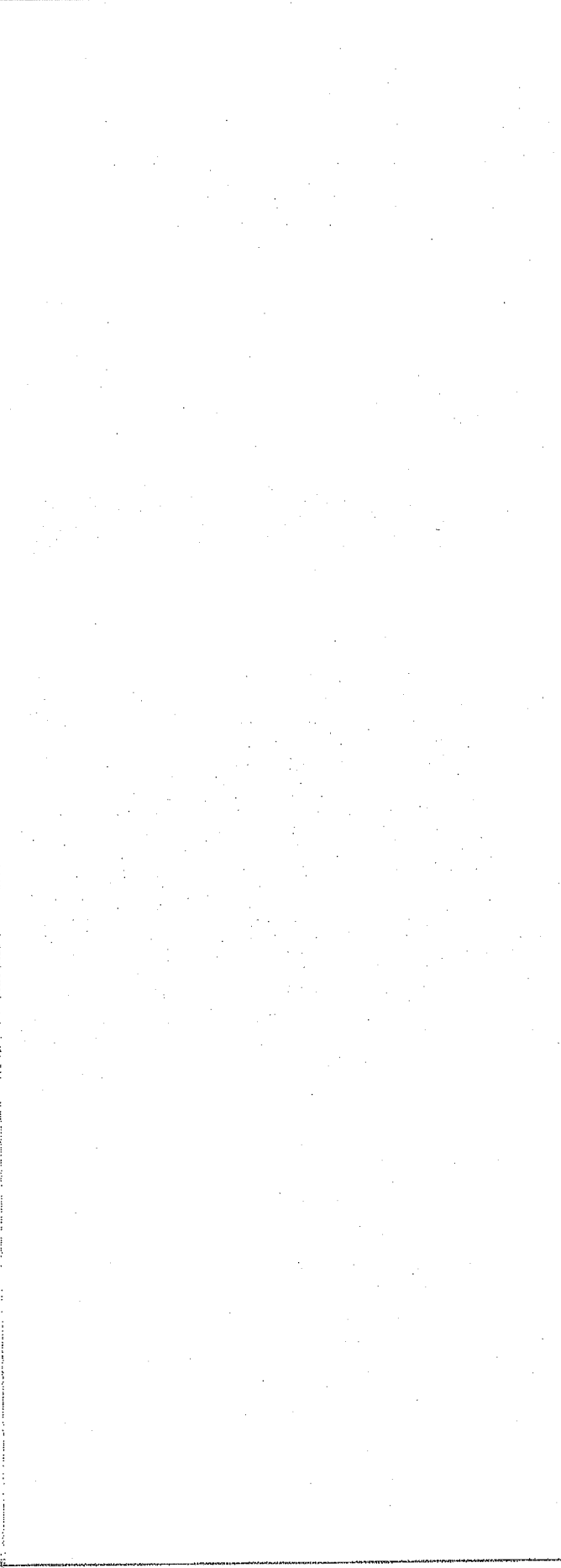
TASK filter: 3-Week Look Ahead (Nogales)

3-Week Look-Ahead

Data Date - 01-Jul-14

© Oracle Corporation

Activity ID	Activity Name	Original Duration	Remaining Duration	Duration % Complete	Start	Finish
PH21080	REINFORCE FTGS	3	3	0%	08-Jul-14	10-Jul-14
PH21090	GRADE/SURVEY	3	3	0%	08-Jul-14	10-Jul-14
PH21120	TEMPLATES	2	2	0%	11-Jul-14	14-Jul-14
PH21130	FORM CURBS/APPRCH	5	5	0%	11-Jul-14	17-Jul-14
PH21140	POUR CURB/GUTTERS	10	10	0%	11-Jul-14	24-Jul-14
PH21150	POUR FOUNDATIONS	2	2	0%	15-Jul-14	16-Jul-14
PH21100	DEMO INTERIOR DEVICES	8	8	0%	17-Jul-14	28-Jul-14
PH21110	BLD A SWITCHN OVER	10	10	0%	17-Jul-14	30-Jul-14



TASK filter: 3-Week Look Ahead (Nogales).

3-Week Look-Ahead

Data Date - 01-Jul-14

- Remaining W...
- Actual Level of Effort
- Actual Work
- Remaining W...
- Critical Rema...
- Baseline Mile...



**PCO SUMMARY : GROUPED BY STATUS**

**Project: Nogales High School Revival Project**

PCO NO.	DESCRIPTION	BERNARDS ESTIMATE	CONTRACTOR PROPOSED	APPROVED	ADD. DAYS	CO NO.
<b>1 - Out for Pricing</b>						
012	Perforated Panel Load Testing for DSA	0	0	0	0	0
023	CCD-A-10 - Various Civil Changes	0	0	0	0	0
024	RFI 148 - Drop Off OH Canopy	0	0	0	0	0
027	CCD 009 - Integrated AV Discrepancies	0	0	0	0	0
030	AV Revisions per Submittal #98	0	0	0	0	0
031	Bldg B Restroom Re-work Due to Dimension bust	0	0	0	0	0
033	Delay at Drop-off area due to los voltage electrical vault in the way of completing work	0	0	0	0	0
034	Drop-off area - Delay of work required by Encroachment Permit	0	0	0	0	0
037	RFI #148 - Replace Landscaping /Irrigation wiped out by Culvert Work	0	0	0	0	0
038	COR 024, RFI #160R1 - Communication Pull Boxes	0	2,523	0	0	0
039	RFI #164 - Bldg C Stage Clarifications	0	0	0	0	0
<b>Status Totals</b>		<b>0</b>	<b>2,523</b>	<b>0</b>	<b>0</b>	<b>0</b>
<b>2 - In Negotiation</b>						
015	CCD-B-003 - Architectural Clarifications	0	6,300	0	0	0
016	COR 019/CCD 001/CCD 004/CCD 005 - Changes to UG Utilities	0	176,210	0	0	0
017	CCD-A-006_Campus Wide Electrical Conversion to 480v	0	788,115	0	0	0
025	RFI #93/RFI #155 - Electrical Box size Increase for UG Conduits	0	9,944	9,944	0	0

PCO NO.	DESCRIPTION	BERNARDS ESTIMATE	CONTRACTOR PROPOSED	APPROVED	ADD. DAYS	CO NO.
---------	-------------	-------------------	---------------------	----------	-----------	--------

**2 - In Negotiation**

026	CCD #008 - Added Electrical & Trash Enclosure	0	1,551	0	0	0
028	Provide 'ADA' covers for bio-clean vault	0	5,736	0	0	0
032	COR 023, Provide Temp Fencing & Trench Plates to accommodate summer 2014 work	0	9,212	0	0	0
035	RFI 139 - Rough in for Fire Detection Indicator Lights in Attic Space	0	4,614	0	0	0
036	COR 021, RFI #152 - Add Strip Light & Wall Sensor to Room C114	0	1,013	0	0	0

<b>Status Totals</b>		<b>0</b>	<b>1,002,695</b>	<b>9,944</b>	<b>0</b>	<b>0</b>
----------------------	--	----------	------------------	--------------	----------	----------

**3 - Project Team Approved**

019	COR 015/CD09/RFI #101 - Area of repose @ utility trenches affecting (3) Structural Columns	0	10,385	0	0	0
020	COR 014/CD11 / RFI #097 - Provide Floor Boxes & Conduits for tel/data in 2nd floor conference room	0	2,114	0	0	0
029	CD12 - Remove (2) +/- 18' runs of transite pipe to edge of existing flatwork at NE corner of site near the Band bldg	4,500	0	0	0	0

<b>Status Totals</b>		<b>4,500</b>	<b>12,499</b>	<b>0</b>	<b>0</b>	<b>0</b>
----------------------	--	--------------	---------------	----------	----------	----------

**4 - CO Approved**

001	(EPC CO#01) - Constructability Review Clarifications	0	0	0	0	0
002	(EPC CO #01) - CD-01 - Building H Permanent Power Re-feed	5,000	7,746	7,746	0	0
003	(EPC CO#01) - CD-02 - Repower Message Board and Parking Lot Lights	2,716	2,716	2,716	0	0
004	(EPC CO#1) - CD-03 - Transite Panel Remediation	6,000	8,600	5,749	0	0
005	(EPC CO#01) - CD-05/RFI #009 - Temporary Power Distribution	175,000	194,390	164,378	0	0
006	(EPC CO#01) - RFI #004 - Fire Sprinklers Building D	0	2,333	2,333	0	0
007	(EPC CO#01) - CD-04/RFI #012 - Reclaimed Water Main	0	14,298	14,298	0	0
008	(EPC CO #01) - RFI #020 - Sanitary Sewer Lines	0	1,155	1,155	0	0

PCO NO.	DESCRIPTION	BERNARDS ESTIMATE	CONTRACTOR PROPOSED	APPROVED	ADD. CO DAYS
<b>4 - CO Approved</b>					
009	(EPC CO #01) - Delays/Potential Delays Due to Various Unforeseen Conditions	0	0	0	0
010	(EPC CO#01) - CCD-B-002/RFI #006 - Coiling Roll-up Door Ratings and Operation	5,000	3,862	3,862	0
011	(EPC CO #01) - CD-08 - Soils Export/Import	300,000	300,000	300,000	0
013	(EPC CO #01) - COR010/CD-06 - Repair Sewer Line at Bldg. G Restrooms	3,000	3,000	0	0
014	(EPC CO#01) COR 008/CD-07 - Remove Additional Transite Pipe	10,000	10,086	10,086	0
<b>Status Totals</b>		<b>506,716</b>	<b>548,186</b>	<b>512,323</b>	<b>0</b>
<b>5 - Rejected</b>					
021	**VOID**COR 016, RFI #105 - Roof Drain POC @ Building B	0	2,803	0	0
022	**VOID** COR 017RFI #107 - Roof Drain POC @ Building A	0	2,803	0	0
<b>Status Totals</b>		<b>0</b>	<b>5,606</b>	<b>0</b>	<b>0</b>
<b>6 - Closed</b>					
018	VOID - CD010/RFI #93 - Box size for Communication Underground Conduits	0	0	0	0
<b>Status Totals</b>		<b>0</b>	<b>0</b>	<b>0</b>	<b>0</b>
<b>PROJECT TOTALS:</b>		<b>511,216</b>	<b>1,571,509</b>	<b>522,267</b>	<b>0</b>



**MASTER SUBMITTAL PACKAGE LOG : SUMMARY VIEW**

**Project:** Nogales High School Revival Project

**Report Date:** 7/1/2014

SUBMITTAL PACKAGE NO.	PACKAGE DESCRIPTION	PACKAGE AUTHOR	REVIEWER	ACTION	DATE SENT	DATE DUJ	DATE RETURNED	DAYS IN REVIEW
00022-09 51 00-1	Acoustical Ceilings Samples	Echo Pacific Construction, Inc.	Bernards	Reviewed	2/20/2014		2/20/2014	0
00003-01 35 49-0	Hazardous Material/Abatement Submittal	Echo Pacific Construction, Inc.	Vista Environmental Consulting	Reviewed with Corrections	11/27/2013	12/11/2013	12/9/2013	12
00004-33 11 16-0	Water System Submittals	Echo Pacific Construction, Inc.	HMC Architects	Reviewed	12/3/2013	12/17/2013	12/10/2013	7
00005-33 31 11-0	Sanitary Sewage System Submittals	Echo Pacific Construction, Inc.	HMC Architects	Reviewed	12/3/2013	12/17/2013	12/10/2013	7
00006-33 41 00-0	Storm Drain System Submittals	Echo Pacific Construction, Inc.	HMC Architects	Reviewed	12/3/2013	12/17/2013	12/10/2013	7
00007-02 41 16-0	Building Demolition Submittals	Echo Pacific Construction, Inc.	HMC Architects	Reviewed	12/6/2013	12/20/2013	12/6/2013	0
00009-22 20 00-0	Plumbing Submittals	Echo Pacific Construction, Inc.	HMC Architects	Revise and Resubmit	12/6/2013	12/20/2013	12/9/2013	3
00010-14 42 22-0	Convertible Stairway/Wheelchair Lift Submittals	Echo Pacific Construction, Inc.	HMC Architects	Reviewed	12/6/2013	12/20/2013	12/16/2013	10
00012-07 21 00-0	Building Insulation Submittals	Echo Pacific Construction, Inc.	HMC Architects	Reviewed	12/6/2013	12/20/2013	12/6/2013	0
00015-14 24 00-0	Modular Hydraulic Elevator Submittals	Echo Pacific Construction, Inc.	HMC Architects	Reviewed with Corrections	12/6/2013	12/20/2013	12/23/2013	17
00016-32 12 16-0	Asphalt Paving and Pavement Markings Submittals	Echo Pacific Construction, Inc.	HMC Architects	Reviewed	12/9/2013	12/23/2013	1/27/2014	49
00019-09 54 26-0	Linear Wood Ceilings Submittals	Echo Pacific Construction, Inc.	HMC Architects	Reviewed with Corrections	12/9/2013	12/23/2013	1/9/2014	31
00020-09 72 17-0	Fiberglass Reinforced Polyester Panels Submittals	Echo Pacific Construction, Inc.	HMC Architects	Reviewed with Corrections	12/9/2013	12/23/2013	12/10/2013	1
00011-14 42 22-0	Convertible Stairway/Wheelchair Lift Samples	Echo Pacific Construction, Inc.	HMC Architects	Reviewed with Corrections	12/10/2013	12/24/2013	12/17/2013	7
00022-09 51 00-0	Acoustical Ceilings Samples	Echo Pacific Construction, Inc.	HMC Architects	Reviewed	12/10/2013	12/24/2013	2/3/2014	55

SUBMITTAL PACKAGE NO.	PACKAGE DESCRIPTION	PACKAGE AUTHOR	REVIEWER	ACTION	DATE SENT	DATE DUE	DATE RETURNED	DAYS IN REVIEW
00024-09 24 00-0	Portland Cement Plaster Submittals	Echo Pacific Construction, Inc.	HMC Architects	Reviewed	12/13/2013	12/27/2013	1/16/2014	34
00025-07 81 00-0	Fireproofing Submittals	Echo Pacific Construction, Inc.	HMC Architects	Reviewed	12/16/2013	12/30/2013	2/18/2014	64
00026-28 00 00-0	Electrical General Materials Submittals	Echo Pacific Construction, Inc.	HMC Architects	Reviewed with Corrections	12/16/2013	12/30/2013	2/19/2014	65
00027-09 90 00-0	Painting Submittals	Echo Pacific Construction, Inc.	HMC Architects	Reviewed	12/16/2013	12/30/2013	1/17/2014	32
00028-07 42 13-0	Formed Metal Panels Submittal	Echo Pacific Construction, Inc.	HMC Architects	Reviewed	12/16/2013	12/30/2013	3/13/2014	87
00029-07 72 00-0	Roof Accessories Submittal	Echo Pacific Construction, Inc.	HMC Architects	Reviewed	12/16/2013	12/30/2013	1/23/2014	38
00030-10 11 16-0	Markerboards Submittal	Echo Pacific Construction, Inc.	HMC Architects	Reviewed	12/16/2013	12/30/2013	1/23/2014	38
00031-07 18 13-0	Traffic Coatings Submittal	Echo Pacific Construction, Inc.	HMC Architects	Reviewed with Corrections	12/16/2013	12/30/2013	1/23/2014	38
00032-07 92 00-0	Joint Sealants Submittal (Traffic and Type 7)	Echo Pacific Construction, Inc.	HMC Architects	Reviewed with Corrections	12/16/2013	12/30/2013	1/27/2014	42
00013-12 24 13-1	Roller Shades Resubmittals	Echo Pacific Construction, Inc.	HMC Architects	Reviewed with Corrections	12/31/2013	1/14/2014	1/8/2014	8
00046-03 30 00-0	Concrete Formwork Submittals	Echo Pacific Construction, Inc.	HMC Architects	Reviewed	1/7/2014	1/21/2014	1/9/2014	2
00048-03 35 00-0	Concrete Floor Finishing Submittals	Echo Pacific Construction, Inc.	HMC Architects	Reviewed	1/7/2014	1/21/2014	2/11/2014	35
00049-03 35 19-0	Integrally Colored Concrete Floor Finishing Submittals	Echo Pacific Construction, Inc.	HMC Architects	Reviewed	1/7/2014	1/21/2014	2/18/2014	42
00050-32 13 13-0	Sitework Concrete Submittals	Echo Pacific Construction, Inc.	HMC Architects	Reviewed	1/7/2014	1/21/2014	2/5/2014	29
00051-32 13 14-0	Portland Cement Concrete Paving Submittals	Echo Pacific Construction, Inc.	HMC Architects	Reviewed	1/7/2014	1/21/2014	2/5/2014	29
00008-05 12 00-1	Structural Steel Shop Drawings - Anchor Bolts	Echo Pacific Construction, Inc.	HMC Architects	Reviewed with Corrections	1/8/2014	1/22/2014	1/24/2014	16
00018-09 51 00-1	Acoustical Ceilings Submittals	Echo Pacific Construction, Inc.	HMC Architects	Reviewed	1/9/2014	1/23/2014	2/18/2014	40
00054-32 90 00-0	Irrigation and Landscaping Submittals	Echo Pacific Construction, Inc.	HMC Architects	Revise and Resubmit	1/10/2014	1/24/2014	1/29/2014	19
00061-11 40 00-0	Food Service Equipment Submittals	Echo Pacific Construction, Inc.	HMC Architects	Reviewed with Corrections	1/13/2014	1/27/2014	1/23/2014	10
00064-09 29 00-0	Gypsum Board Submittals	Echo Pacific Construction, Inc.	HMC Architects	Reviewed	1/14/2014	1/28/2014	2/20/2014	37

SUBMITTAL PACKAGE NO.	PACKAGE DESCRIPTION	PACKAGE AUTHOR	REVIEWER	ACTION	DATE SENT	DATE DUE	DATE RETURNED	DAYS IN REVIEW
00065-10 22 26-0	Operable Partitions Submittals	Echo Pacific Construction, Inc.	HMC Architects	Reviewed	1/14/2014	1/28/2014	2/20/2014	37
00066-05 30 00-0	Metal Decking Submittals	Echo Pacific Construction, Inc.	HMC Architects	Reviewed with Corrections	1/14/2014	1/28/2014	2/18/2014	35
00009-22 20 00-1	Plumbing Resubmittals	Echo Pacific Construction, Inc.	HMC Architects	Revise and Resubmit	1/15/2014	1/29/2014	1/21/2014	6
00038-23 03 00-1	HVAC Submittals (Temp. Controls & HVAC Product Data)	Echo Pacific Construction, Inc.	HMC Architects	Revise and Resubmit	1/15/2014	1/29/2014	1/17/2014	2
00072-09 30 00-0	Tile Submittals	Echo Pacific Construction, Inc.	HMC Architects	Reviewed	1/16/2014	1/30/2014	2/25/2014	40
00073-09 30 16-0	Quarry Tile Submittal	Echo Pacific Construction, Inc.	HMC Architects	Reviewed	1/16/2014	1/30/2014	2/25/2014	40
00074-06 41 00-0	Casework Submittals	Echo Pacific Construction, Inc.	HMC Architects	Reviewed with Corrections	1/16/2014	1/30/2014	3/26/2014	69
00069-05 12 00-0	Structural Steel Shop Drawings - Canopies	Echo Pacific Construction, Inc.	HMC Architects	Reviewed with Corrections	1/17/2014	1/31/2014	2/6/2014	20
00014-12 24 13-1	Roller Shades Samples	Echo Pacific Construction, Inc.	HMC Architects	Reviewed with Corrections	1/22/2014	2/5/2014	2/11/2014	20
00022-09 51 00-1	Acoustical Ceilings Samples	Echo Pacific Construction, Inc.	HMC Architects	Revise and Resubmit	1/22/2014	2/5/2014	2/5/2014	14
00067-03 35 00-0	Concrete Floor Finishing Samples	Echo Pacific Construction, Inc.	HMC Architects	Reviewed	1/22/2014	2/5/2014	2/11/2014	20
00068-03 35 19-0	Integrally Colored Concrete Floor Finishing Samples	Echo Pacific Construction, Inc.	HMC Architects	Reviewed	1/22/2014	2/5/2014	2/18/2014	27
00070-10 11 16-0	Markerboards Samples	Echo Pacific Construction, Inc.	HMC Architects	Reviewed	1/22/2014	2/5/2014	2/11/2014	20
00075-06 41 00-0	Casework Samples	Echo Pacific Construction, Inc.	HMC Architects	Reviewed	1/22/2014	2/5/2014	4/1/2014	69
00076-06 61 16-0	Solid Polymer Fabrications Submittal	Echo Pacific Construction, Inc.	HMC Architects	Reviewed	1/22/2014	2/5/2014	3/7/2014	44
00063-10 21 23-0	Cubicle Curtains and Track Assembly - Samples	Echo Pacific Construction, Inc.	HMC Architects	Reviewed	1/22/2014	2/5/2014	3/4/2014	41
00084-12 48 13-0	Entrance Mat - Samples	Echo Pacific Construction, Inc.	HMC Architects	Reviewed	1/22/2014	2/5/2014	2/11/2014	20
00077-10 21 00-0	Toilet Compartment Submittal	Echo Pacific Construction, Inc.	HMC Architects	Reviewed with Corrections	1/23/2014	2/6/2014	3/7/2014	43
00078-10 21 23-0	Cubicle Curtains & Track Assembly Submittal	Echo Pacific Construction, Inc.	HMC Architects	Reviewed with Corrections	1/23/2014	2/6/2014	2/5/2014	13
00080-10 44 13-0	Fire Extinguisher and Cabinets Submittal	Echo Pacific Construction, Inc.	HMC Architects	Reviewed with Corrections	1/23/2014	2/6/2014	3/10/2014	46



SUBMITTAL PACKAGE NO.	PACKAGE DESCRIPTION	PACKAGE AUTHOR	REVIEWER	ACTION	DATE SENT	DATE DUJ	DATE RETURNED	DAYS IN REVIEW
00081-11 52 13-0	Projection Screen Submittal	Echo Pacific Construction, Inc.	HMC Architects	Reviewed with Corrections	1/23/2014	2/6/2014	3/12/2014	48
00082-12 48 13-0	Entrance Mats Submittal	Echo Pacific Construction, Inc.	HMC Architects	Reviewed	1/23/2014	2/6/2014	2/6/2014	14
00017-06 42 17-1	Wood Wall Panels Submittals	Echo Pacific Construction, Inc.	HMC Architects	Reviewed	1/28/2014	2/11/2014	1/28/2014	0
00021-06 42 17-1	Wood Wall Panels/Linear Wood Ceiling Samples	Echo Pacific Construction, Inc.	HMC Architects	Reviewed	1/28/2014	2/11/2014	1/29/2014	1
00062-05 40 00-1	Cold Formed Metal Framing - Axially Loaded Submittals	Echo Pacific Construction, Inc.	HMC Architects	Reviewed with Corrections	1/28/2014	2/11/2014	2/3/2014	6
00063-09 22 16-1	Cold Formed Metal Framing - Non-Load Bearing Submittals	Echo Pacific Construction, Inc.	HMC Architects	Reviewed with Corrections	1/28/2014	2/11/2014	2/3/2014	6
00094-08 71 00-0	Door Hardware Submittals	Echo Pacific Construction, Inc.	HMC Architects	Reviewed with Corrections	1/29/2014	2/12/2014	2/3/2014	5
00044-03 20 00-2	Concrete Reinforcement - Shop Drawings	Echo Pacific Construction, Inc.	HMC Architects	Reviewed with Corrections	2/7/2014	2/14/2014	2/18/2014	11
00088-05 51 00-0	Metal Stairs_Handrails_Railings - Shop Drawings	Echo Pacific Construction, Inc.	Echo Pacific Construction, Inc.	Reviewed with Corrections	1/31/2014	2/14/2014	4/22/2014	81
00090-08 34 59-0	Vault Door Submittals	Echo Pacific Construction, Inc.	HMC Architects	Reviewed	2/3/2014	2/17/2014	3/11/2014	36
00093-08 11 00-0	Hollow Metal Doors and Frames Submittals	Echo Pacific Construction, Inc.	HMC Architects	Reviewed with Corrections	2/3/2014	2/17/2014	3/18/2014	43
00089-09 90 00-0	Painting Samples	Echo Pacific Construction, Inc.	HMC Architects	Reviewed with Corrections	2/4/2014	2/18/2014	3/11/2014	35
00096-07 42 13-0	Formed Metal Panels/Sheet Metal Flashing & Trim - Shop Drawings	Echo Pacific Construction, Inc.	HMC Architects	Revise and Resubmit	2/4/2014	2/18/2014	3/11/2014	35
00097-09 30 00-0	Tiling and Quarry Tile Samples	Echo Pacific Construction, Inc.	HMC Architects	Reviewed with Corrections	2/4/2014	2/18/2014	2/25/2014	21
00095-11 40 00-0	Food Service Equipment - Locker Color Charts	Echo Pacific Construction, Inc.	Echo Pacific Construction, Inc.	Reviewed with Corrections	2/5/2014	2/19/2014	5/9/2014	93
00091-07 95 13-0	Expansion Joint, Cover Assemblies Submittals	Echo Pacific Construction, Inc.	HMC Architects	Reviewed	2/6/2014	2/20/2014	3/11/2014	33
00098-27 10 00-0	Comm Cabling, Antenna & AV Systems Submittals	Echo Pacific Construction, Inc.	Echo Pacific Construction, Inc.	Reviewed with Corrections	2/6/2014	2/20/2014	5/2/2014	85
00099-27 51 13-0	Public Address, Clock, Local Sound, & Asst Listening Submittals	Echo Pacific Construction, Inc.	HMC Architects	Reviewed with Corrections	2/6/2014	2/20/2014	3/20/2014	42
00100-09 22 16-0	Cold Formed Metal Framing - Vertical Clips	Echo Pacific Construction, Inc.	HMC Architects	Reviewed	2/7/2014	2/21/2014	2/18/2014	11
00103-09 65 19-0	Resilient Tile Flooring Submittals	Echo Pacific Construction, Inc.	HMC Architects	Reviewed with Corrections	2/10/2014	2/24/2014	3/28/2014	46

SUBMITTAL PACKAGE NO.	PACKAGE DESCRIPTION	PACKAGE AUTHOR	REVIEWER	ACTION	DATE SENT	DATE DUE	DATE RETURNED	DAYS IN REVIEW
00104-09 68 13-0	Carpet Tile and Sheet Carpeting Submittal	Echo Pacific Construction, Inc.	HMC Architects	Reviewed with Corrections	2/10/2014	2/24/2014	3/31/2014	49
00037-01 30 00-1	General Conditions - Master Construction Schedule	Echo Pacific Construction, Inc.	Bernards	Reviewed	2/11/2014	2/25/2014	2/13/2014	2
00092-07 95 13-0	Expansion Joint, Cover Assemblies: Samples	Echo Pacific Construction, Inc.	HMC Architects	Reviewed	2/11/2014	2/25/2014	3/11/2014	28
00105-09 65 00-0	Resilient Flooring and Carpet Samples	Echo Pacific Construction, Inc.	HMC Architects	Reviewed with Corrections	2/11/2014	2/25/2014	2/25/2014	14
00106-07 26 00-0	Weather and Vapor Barrier Retarder Films Submittal	Echo Pacific Construction, Inc.	HMC Architects	Reviewed	2/13/2014	2/27/2014	3/31/2014	46
00047-03 30 00-1	Cast-in-Place Concrete Resubmittals	Echo Pacific Construction, Inc.	HMC Architects	Reviewed with Corrections	2/18/2014	2/28/2014	3/4/2014	14
00107-07 46 46-0	Exterior Fiber Cement Siding Submittal	Echo Pacific Construction, Inc.	HMC Architects	Reviewed with Corrections	2/14/2014	2/28/2014	3/31/2014	45
00009-22 20 00-2	Plumbing Resubmittals - Grease Interceptor	Echo Pacific Construction, Inc.	HMC Architects	Reviewed	2/18/2014	3/4/2014	2/19/2014	1
00110-07 62 00-0	Sheet Metal Flashing & Trim	Echo Pacific Construction, Inc.	HMC Architects	Reviewed	2/20/2014	3/6/2014	3/18/2014	26
00033-03 48 00-1	Precast Concrete Specialties Submittals	Echo Pacific Construction, Inc.	HMC Architects	Reviewed with Corrections	2/21/2014	3/7/2014	2/24/2014	3
00035-10 11 23-1	Tackboard Resubmittals	Echo Pacific Construction, Inc.	HMC Architects	Reviewed with Corrections	2/21/2014	3/7/2014	3/7/2014	14
00054-32 90 00-1	Irrigation Resubmittals	Echo Pacific Construction, Inc.	HMC Architects	Reviewed	2/21/2014	3/7/2014	3/6/2014	13
00111-05 12 00-0	Architecturally Exposed Structural Steel - Shop Drawings	Echo Pacific Construction, Inc.	Echo Pacific Construction, Inc.	Reviewed	2/24/2014	3/10/2014	4/22/2014	57
00071-10 11 23-1	Tackboards Samples	Echo Pacific Construction, Inc.	HMC Architects	Reviewed with Corrections	2/25/2014	3/11/2014	3/4/2014	7
00109-07 42 13-0	Formed Metal Panels and Sheet Metal Flashing & Trim Samples	Echo Pacific Construction, Inc.	HMC Architects	Reviewed with Corrections	2/25/2014	3/11/2014	3/13/2014	16
00041-05 12 00-1	Structural and Architecturally Exposed Structural Steel - Welding Procedures	Echo Pacific Construction, Inc.	HMC Architects	Reviewed with Corrections	2/26/2014	3/12/2014	2/28/2014	2
00113-06 41 13-0	Wood Casework Samples	Echo Pacific Construction, Inc.	HMC Architects	Reviewed	2/26/2014	3/12/2014	3/7/2014	9
00114-06 61 16-0	Solid Polymer Fabrication Samples	Echo Pacific Construction, Inc.	Bernards	Reviewed	2/26/2014	3/12/2014	3/7/2014	9
00115-06 41 13-0	Wood Casework Submittal	Echo Pacific Construction, Inc.	HMC Architects	Reviewed	2/27/2014	3/13/2014	3/31/2014	32
00023-09 72 17-1	Fiberglass Reinforced Polyester Panels Samples	Echo Pacific Construction, Inc.	HMC Architects	Reviewed	3/4/2014	3/18/2014	3/7/2014	3

SUBMITTAL PACKAGE NO.	PACKAGE DESCRIPTION	PACKAGE AUTHOR	REVIEWER	ACTION	DATE SENT	DATE DUE	DATE RETURNED	DAYS IN REVIEW
00117-10 14 00-0	Identification Signs: Samples	Echo Pacific Construction, Inc.	HMC Architects	Reviewed	3/4/2014	3/18/2014	3/7/2014	3
00118-07 42 13-0	Formed Metal Panels Samples	Echo Pacific Construction, Inc.	HMC Architects	Reviewed with Corrections	3/4/2014	3/18/2014	3/12/2014	8
00119-03 48 00-0	Precast Concrete Specialties	Echo Pacific Construction, Inc.	HMC Architects	Reviewed with Corrections	3/11/2014	3/25/2014	4/1/2014	21
00079-10 28 00-1	Toilet Accessories Submittal	Echo Pacific Construction, Inc.	HMC Architects	Reviewed	3/12/2014	3/26/2014	3/12/2014	0
00120-26 00 00-0	Electrical Submittals - 480v Conversion	Echo Pacific Construction, Inc.	HMC Architects	Reviewed with Corrections	3/12/2014	3/26/2014	3/25/2014	13
00038-04 22 00-1	Concrete Unit Masonry Submittals	Echo Pacific Construction, Inc.	HMC Architects	Reviewed	3/13/2014	3/27/2014	3/17/2014	4
00121-28 31 11-0	Digital Addressable Fire Alarm System - Shop Drawings	Echo Pacific Construction, Inc.	Echo Pacific Construction, Inc.	Reviewed	3/19/2014	4/2/2014	5/2/2014	44
00123-08 80 00-0	Glazing Submittals (Product Data & Qualifications)	Echo Pacific Construction, Inc.	Echo Pacific Construction, Inc.	Reviewed	3/19/2014	4/2/2014	5/9/2014	51
00125-01 30 00-0	General Conditions - Schedule of Values	Echo Pacific Construction, Inc.	Bernards	Reviewed	3/25/2014	4/8/2014	4/2/2014	8
00055-05 12 00-2	Structural Steel Shop Drawings - BldgB	Echo Pacific Construction, Inc.	HMC Architects	Reviewed with Corrections	3/27/2014	4/10/2014	4/10/2014	14
00102-09 65 13-0	Resilient Base Submittals	Echo Pacific Construction, Inc.	HMC Architects	Reviewed	3/28/2014	4/11/2014	4/1/2014	4
00040-05 12 00-2	Structural Steel Shop Drawings - BldgA	Echo Pacific Construction, Inc.	Echo Pacific Construction, Inc.	Reviewed with Corrections	3/31/2014	4/14/2014	4/22/2014	22
00122-08 41 13-0	Aluminum-Framed Entrances and Storefronts - Product Data	Echo Pacific Construction, Inc.	HMC Architects	Reviewed	4/3/2014	4/17/2014	5/9/2014	36
00127-26 05 33-0	Raceway and Boxes For Electrical Systems - Underground Ducts & Accessories Submittal	Echo Pacific Construction, Inc.	Echo Pacific Construction, Inc.	Reviewed	4/7/2014	4/21/2014	5/2/2014	25
00126-07 46 46-0	Exterior Fiber Cement Siding: Samples - Trim and Shingles	Echo Pacific Construction, Inc.	Echo Pacific Construction, Inc.	Reviewed	4/8/2014	4/22/2014	5/9/2014	31
00128-33 41 00-0	Storm Drain Systems - Nutrient Separating Baffle Box Submittal	Echo Pacific Construction, Inc.	HMC Architects	Reviewed	4/8/2014	4/22/2014	4/14/2014	6
00129-26 05 33-0	Raceway and Boxes for Electrical Systems-Handholes and Boxes for Exterior Underground Wiring Submittal	Echo Pacific Construction, Inc.	Echo Pacific Construction, Inc.	Reviewed	4/9/2014	4/23/2014	5/2/2014	23
00130-27 05 26-0	Grounding & Bonding for Communication	Echo Pacific Construction, Inc.	Echo Pacific Construction, Inc.	Reviewed	4/10/2014	4/24/2014	5/13/2014	33

SUBMITTAL PACKAGE NO.	PACKAGE DESCRIPTION	PACKAGE AUTHOR	REVIEWER	ACTION	DATE SENT	DATE DUE	DATE RETURNED	DAYS IN REVIEW
00131-05 12 00-0	Architecturally Exposed Structural Steel Shop Drawings - Panels	Echo Pacific Construction, Inc.	HMC Architects	Reviewed	4/14/2014	4/28/2014	4/17/2014	3
00132-26 00 00-0	Electrical - Low Voltage Transformers Submittals	Echo Pacific Construction, Inc.	HMC Architects	Reviewed	4/15/2014	4/29/2014	4/17/2014	2
00133-26 00 00-0	Electrical Submittals - Fuses	Echo Pacific Construction, Inc.	HMC Architects	Reviewed	4/15/2014	4/29/2014	4/17/2014	2
00134-26 00 00-0	Electrical Submittals - Switchboards	Echo Pacific Construction, Inc.	HMC Architects	Reviewed	4/15/2014	4/29/2014	4/17/2014	2
00135-26 00 00-0	Electrical Submittals - Panelboards	Echo Pacific Construction, Inc.	HMC Architects	Reviewed	4/15/2014	4/29/2014	4/17/2014	2
00136-26 00 00-0	Electrical Submittals M&O Building-Transient-Voltage Suppression for Low-Voltage Electrical Power Circuits	Echo Pacific Construction, Inc.	Echo Pacific Construction, Inc.	Reviewed	4/15/2014	4/29/2014	5/13/2014	28
00085-08 33 23-1	Overhead Coiling Doors Submittals	Echo Pacific Construction, Inc.	HMC Architects	Reviewed with Corrections	4/16/2014	4/30/2014	5/2/2014	16
00086-08 33 24-1	Overhead Coiling Doors - Countertops Submittals	Echo Pacific Construction, Inc.	Echo Pacific Construction, Inc.	Reviewed with Corrections	4/16/2014	4/30/2014	5/2/2014	16
00140-26 00 00-0	Switchboards-Enclosed Switches/Disconnect Switches Submittal	Echo Pacific Construction, Inc.	Echo Pacific Construction, Inc.	Reviewed with Corrections	4/16/2014	4/30/2014	4/23/2014	7
00139-26 00 00-0	Electrical Submittals - Interior Theatrical Lighting (Bldg C)	Echo Pacific Construction, Inc.	Echo Pacific Construction, Inc.	Reviewed	4/17/2014	5/1/2014	5/6/2014	19
00141-05 12 00-0	Structural Steel Framing - M&O Building	Echo Pacific Construction, Inc.	Echo Pacific Construction, Inc.	Reviewed with Corrections	4/17/2014	5/1/2014	5/9/2014	22
00144-26 00 00-0	Electrical Submittals - Lighting Control Devices (M&O Building)	Echo Pacific Construction, Inc.	Echo Pacific Construction, Inc.	Reviewed	4/18/2014	5/2/2014	5/6/2014	18
00145-26 00 00-0	Electrical Submittals - Wiring Devices	Echo Pacific Construction, Inc.	Echo Pacific Construction, Inc.	Reviewed with Corrections	4/18/2014	5/2/2014	5/21/2014	33
00146-06 41 00-0	Casework Hardware	Echo Pacific Construction, Inc.	Echo Pacific Construction, Inc.	Reviewed	4/22/2014	5/6/2014	5/14/2014	22
00147-07 25 00-0	Concrete Slab Vapor Emissions	Echo Pacific Construction, Inc.	Echo Pacific Construction, Inc.	Reviewed	4/23/2014	5/7/2014	5/1/2014	8
00038-23 03 00-4	HVAC Submittals - Duct Liner (Resubmittal)	Echo Pacific Construction, Inc.	Echo Pacific Construction, Inc.	Reviewed	4/24/2014	5/8/2014	4/25/2014	1
00150-26 05 19-0	Qualification Data for Low Voltage and Electrical Systems	Echo Pacific Construction, Inc.	Echo Pacific Construction, Inc.	Reviewed	4/25/2014	5/9/2014	5/9/2014	14
00089-09 90 00-1	Painting Samples (P-6)	Echo Pacific Construction, Inc.	Echo Pacific Construction, Inc.	Reviewed	4/29/2014	5/13/2014	5/6/2014	7
00151-07 19 00-0	Waterproofing (Concrete Walls & Elevator Pit)	Echo Pacific Construction, Inc.	HMC Architects	Reviewed	5/1/2014	5/15/2014	5/1/2014	0

SUBMITTAL PACKAGE NO.	PACKAGE DESCRIPTION	PACKAGE AUTHOR	REVIEWER	ACTION	DATE SENT	DATE DUJ	DATE RETURNED	DAYS IN REVIEW
00152-26 09 23-0	Lighting Controls - Buildings A-D	Echo Pacific Construction, Inc.	HMC Architects	Reviewed	5/1/2014	5/15/2014	5/13/2014	12
00153-03 10 00-0	Under-Slab Vapor Barrier (10 Mil for Bldg B and 15 mil for Bldg A, C&D)	Echo Pacific Construction, Inc.	HMC Architects	Reviewed	5/1/2014	5/15/2014	5/2/2014	1
00154-08 56 19-0	Pass Thru Window	Echo Pacific Construction, Inc.	Echo Pacific Construction, Inc.	Reviewed	5/6/2014	5/20/2014	5/29/2014	23
00156-28 31 11-0	Digital Addressable Fire Alarms & Systems Submittal - Product Data	Echo Pacific Construction, Inc.	Echo Pacific Construction, Inc.	Reviewed	5/7/2014	5/21/2014	5/21/2014	14
00157-08 00 00-0	Aluminum Entrances, Storefronts and Glazing Submittals	Echo Pacific Construction, Inc.	HMC Architects	Reviewed	5/6/2014	5/22/2014	5/29/2014	21
00158-33 41 00-0	Storm Drain Systems-Nutrient Separating Baffle Box: ADA Lids	Echo Pacific Construction, Inc.	Echo Pacific Construction, Inc.	Reviewed	5/9/2014	5/23/2014	5/13/2014	4
00159-04 22 00-0	Concrete Unit Masonry(Bldg A-CCD 005): Shop Drawings for Masonry Units & Reinforcing Steel	Echo Pacific Construction, Inc.	Echo Pacific Construction, Inc.	Reviewed with Corrections	5/12/2014	5/26/2014	5/13/2014	1
00160-28 31 11-0	Digital Addressable Fire Alarms and System: Shop Drawings (M&O Building)	Echo Pacific Construction, Inc.	Echo Pacific Construction, Inc.	Reviewed with Corrections	5/13/2014	5/27/2014	6/17/2014	35
00161-05 12 00-0	Structural Steel - Product Data	Echo Pacific Construction, Inc.	HMC Architects	Reviewed	5/14/2014	5/28/2014	5/14/2014	0
00165-26 00 10-0	Electrical Fuses: Ambient Temperature	Echo Pacific Construction, Inc.	Echo Pacific Construction, Inc.	Reviewed	5/21/2014	6/4/2014	6/17/2014	27
00166-32 17 23-0	Pavement Markings Product Data: Truncated Domes	Echo Pacific Construction, Inc.	Echo Pacific Construction, Inc.	Reviewed	5/21/2014	6/4/2014	5/22/2014	1
00167-08 13 13-0	Hollow Metal Doors - Window Fire Labeling	Echo Pacific Construction, Inc.	Echo Pacific Construction, Inc.	Reviewed	5/22/2014	6/5/2014	5/22/2014	0
00168-26 05 00-0	Penetration Fire-Stopping (Electrical)	Echo Pacific Construction, Inc.	Echo Pacific Construction, Inc.	Reviewed	5/23/2014	6/6/2014	6/17/2014	25
00040-05 12 00-4	Structural Steel Shop Drawings - BldgD (RESUBMITTAL)	Echo Pacific Construction, Inc.	Echo Pacific Construction, Inc.	Reviewed with Corrections	5/28/2014	6/11/2014	6/16/2014	19
00052-05 12 00-3	Structural Steel Shop Drawings - BldgC (RESUBMITTAL)	Echo Pacific Construction, Inc.	Echo Pacific Construction, Inc.	Reviewed with Corrections	5/28/2014	6/11/2014	6/10/2014	13
00170-05 12 00-0	Structural Steel Framing: Shop Drawings (Bridge between Bldgs. A&B)	Echo Pacific Construction, Inc.	Echo Pacific Construction, Inc.	Reviewed with Corrections	5/28/2014	6/11/2014	6/24/2014	27
00172-03 20 00-0	Shop Drawings for Reinforcing Steel: (Masonry, Site Concrete and Cast-In-Place Concrete)	Echo Pacific Construction, Inc.	Echo Pacific Construction, Inc.	Revise and Resubmit	6/2/2014	6/16/2014	6/16/2014	14
00173-27 41 16-0	Integrated Audio Video Systems: Shop Drawings	Echo Pacific Construction, Inc.	Echo Pacific Construction, Inc.	Reviewed with Corrections	6/2/2014	6/16/2014	6/17/2014	15

SUBMITTAL PACKAGE NO.	PACKAGE DESCRIPTION	PACKAGE AUTHOR	REVIEWER	ACTION	DATE SENT	DATE DUE	DATE RETURNED	DAYS IN REVIEW
00174-27 41 33-0	Master Antenna TV System: Equipment List Only	Echo Pacific Construction, Inc.	Echo Pacific Construction, Inc.	Reviewed	6/2/2014	6/16/2014	6/17/2014	15
00176-08 80 00-0	Glazing Samples	Echo Pacific Construction, Inc.	Echo Pacific Construction, Inc.	Reviewed	6/3/2014	6/17/2014	6/4/2014	1
00177-28 05 00-0	Common Work Results for Electronic Safety & Security: Product Data for Sleeve Seals	Echo Pacific Construction, Inc.	Echo Pacific Construction, Inc.	Reviewed	6/4/2014	6/18/2014	6/17/2014	13
00178-28 05 13-0	Conductors & Cables for Electronic Safety & Security: Product Data	Echo Pacific Construction, Inc.	Echo Pacific Construction, Inc.	Reviewed	6/4/2014	6/18/2014	6/17/2014	13
00182-05 30 00-0	Metal Decking: Shop Drawings-Bldg A & B	Echo Pacific Construction, Inc.	Echo Pacific Construction, Inc.	Reviewed with Corrections	6/6/2014	6/20/2014	6/11/2014	5
00172-03 20 00-1	Shop Drawings for Reinforcing Steel: (Masonry, Site Concrete and Cast-In-Place Concrete)	Echo Pacific Construction, Inc.	HMC Architects	Reviewed with Corrections	6/16/2014	6/30/2014	6/16/2014	0
00162-03 20 00-1	Concrete Reinforcement Shop Drawings - Bldgs A&B 2nd Floor & Roof Decks	Echo Pacific Construction, Inc.	HMC Architects	Reviewed with Corrections	6/30/2014	7/14/2014	6/30/2014	0

Average Days In Review: 24



**MASTER RFI LOG**

**Project:** Nogales High School Revival Project

**Report Date:** 7/1/2014

RFI NO.	SUBJECT	DISCIPLINE	ORIGIN SOURCE	DATE SENT	DATE ANSWERED	POSTED TO DWGS
001	Structural/Architectural Steel Clarifications	Structural	Echo Pacific Construction, Inc.	12/4/2013	3/17/2014	Yes
002	Overhead Roll-up Doors	Architectural	Echo Pacific Construction, Inc.	12/4/2013	12/5/2013	Yes
003	Additional Structural/Architectural Steel Clarifications	Structural	Echo Pacific Construction, Inc.	12/9/2013	12/30/2013	Yes
004	Fire Sprinklers Building D	Fire Protection	Echo Pacific Construction, Inc.	12/10/2013	12/10/2013	Yes
005	Additional Structural/Architectural Steel Clarifications	Structural	Echo Pacific Construction, Inc.	12/12/2013	12/30/2013	Yes
006	Coiling Roll-up Door Ratings and Operation	Architectural	Echo Pacific Construction, Inc.	12/13/2013	1/28/2014	Yes
007	Dimensions of C8 Steel Pieces Along D1.1	Structural	Echo Pacific Construction, Inc.	12/13/2013	1/16/2014	Yes
008	Vault Door Swing	Architectural	Echo Pacific Construction, Inc.	12/13/2013	1/7/2014	Yes
009	Future Schedule Impacts	Electrical	Echo Pacific Construction, Inc.	12/19/2013	1/21/2014	Yes
010	Building D Storm Drain	Civil	Echo Pacific Construction, Inc.	12/19/2013	12/19/2013	Yes
011	Glazing Clarification	Architectural	Echo Pacific Construction, Inc.	12/23/2013	12/23/2013	Yes
012	Transite Pipes in Bldg Foundations	Civil	Echo Pacific Construction, Inc.	12/26/2013	1/21/2014	Yes
013	Clarification of Steel Finishes	Architectural	Echo Pacific Construction, Inc.	12/27/2013	1/14/2014	Yes
014	Additional Structural/Architectural Steel Clarifications	Structural	Echo Pacific Construction, Inc.	1/6/2014	3/18/2014	Yes
015	Horizontal Control	Civil	Echo Pacific Construction, Inc.	1/6/2014	1/9/2014	Yes
015-R1	Horizontal Control	Civil	Echo Pacific Construction, Inc.	1/17/2014	1/20/2014	Yes
016	Parking Lot Utility Trench	Civil	Echo Pacific Construction, Inc.	1/7/2014	1/22/2014	Yes
017	North_South Parking Lot Gas Line	Civil	Echo Pacific Construction, Inc.	1/7/2014	1/14/2014	Yes

RFI NO.	SUBJECT	DISCIPLINE	ORIGIN SOURCE	DATE SENT	DATE ANSWERED	POSTED TO DWGS
018	Poly Gas Line Size	Civil	Echo Pacific Construction, Inc.	1/7/2014	1/9/2014	Yes
019	Additional Structural/Architectural Steel Clarifications	Structural	Echo Pacific Construction, Inc.	1/13/2014	1/16/2014	Yes
020	Sanitary Sewer Lines	Civil	Echo Pacific Construction, Inc.	1/8/2014	1/16/2014	Yes
021	Glazing Schedule	Architectural	Echo Pacific Construction, Inc.	1/14/2014	1/21/2014	Yes
022	Structural/Architectural Steel Clarifications	Structural	Echo Pacific Construction, Inc.	1/16/2014	3/17/2014	Yes
023	Pad Height at Bldg. A	Structural	Echo Pacific Construction, Inc.	1/16/2014	3/11/2014	Yes
024	Bldg A_Rm 123 Lighting	Electrical	Echo Pacific Construction, Inc.	1/29/2014	2/10/2014	Yes
025	Bldg A_Rm 116 Lighting	Electrical	Echo Pacific Construction, Inc.	1/29/2014	2/10/2014	Yes
026	Bldg A_Corridor by Rms 136_137 Lighting	Electrical	Echo Pacific Construction, Inc.	1/29/2014	2/10/2014	Yes
027	Valve on Fire Water System	Fire Protection	Echo Pacific Construction, Inc.	1/29/2014	2/27/2014	Yes
028	SCG Coordination	Civil	Echo Pacific Construction, Inc.	1/27/2014	1/28/2014	Yes
029	Emergency Circuit Sources	Electrical	Echo Pacific Construction, Inc.	1/29/2014	4/3/2014	Yes
030	Emergency Lighting Fixtures_Bldg A	Electrical	Echo Pacific Construction, Inc.	1/29/2014	2/10/2014	Yes
031	Fire Bell Circuiting_Bldg A	Electrical	Echo Pacific Construction, Inc.	1/29/2014	2/27/2014	Yes
032	Circuiting Information_Bldg A	Electrical	Echo Pacific Construction, Inc.	1/29/2014	2/10/2014	Yes
033	Type F Light Fixtures_Bldg B	Electrical	Echo Pacific Construction, Inc.	1/29/2014	2/10/2014	Yes
034	Emergency Lighting Fixtures_Bldg B	Electrical	Echo Pacific Construction, Inc.	1/29/2014	2/10/2014	Yes
035	Type A1 Light Fixtures_Bldg C	Electrical	Echo Pacific Construction, Inc.	1/29/2014	2/11/2014	Yes
036	Exit Signs_Bldg C	Electrical	Echo Pacific Construction, Inc.	1/30/2014	2/11/2014	Yes
037	Roll Up Door - Room C104	Electrical	Echo Pacific Construction, Inc.	1/30/2014	1/30/2014	Yes
038	Projector - Room C101	Electrical	Echo Pacific Construction, Inc.	1/30/2014	2/11/2014	Yes
039	Stage Area - Microphone Connections	Electrical	Echo Pacific Construction, Inc.	1/30/2014	5/2/2014	No



RFI NO.	SUBJECT	DISCIPLINE	ORIGIN SOURCE	DATE SENT	DATE ANSWERED	POSTED TO DWGS
040	Type H Exterior Lights_Bldg D	Electrical	Echo Pacific Construction, Inc.	1/30/2014	2/11/2014	Yes
041	Exit Signs_Bldg D	Electrical	Echo Pacific Construction, Inc.	1/30/2014	2/11/2014	Yes
042	Switchgear_Bldg D	Electrical	Echo Pacific Construction, Inc.	1/30/2014	2/11/2014	Yes
043	GFCI Receptacle_Bldg D Roof	Electrical	Echo Pacific Construction, Inc.	1/30/2014	2/18/2014	Yes
044	Circuiting Information_Bldg D	Electrical	Echo Pacific Construction, Inc.	1/30/2014	2/11/2014	Yes
045	Weather Barrier Film_Weather and Vapor Retarder Films	Architectural	Echo Pacific Construction, Inc.	2/3/2014	2/3/2014	Yes
046	Weather Barrier Films_Portland Cement Plaster	Architectural	Echo Pacific Construction, Inc.	2/3/2014	2/4/2014	Yes
047	Contech Vault	Civil	Echo Pacific Construction, Inc.	1/31/2014	2/20/2014	Yes
048	Bioswale Detail	Civil	Echo Pacific Construction, Inc.	1/31/2014	2/20/2014	Yes
049	AB1-AB4 Elevation Clarifications	Structural	Echo Pacific Construction, Inc.	1/31/2014	2/28/2014	Yes
050	Structural/Architectural Steel Clarifications	Structural	Echo Pacific Construction, Inc.	2/3/2014	2/6/2014	Yes
051	PB-RFI-096 Clarifications	Architectural	Echo Pacific Construction, Inc.	2/6/2014	2/17/2014	Yes
052	Door and Window Dimension Clarifications	Architectural	Echo Pacific Construction, Inc.	2/6/2014	2/17/2014	Yes
053	Opening C102-2	Architectural	Echo Pacific Construction, Inc.	2/6/2014	2/17/2014	Yes
054	Opening D101-1 Fire Rating Verification	Architectural	Echo Pacific Construction, Inc.	2/6/2014	2/17/2014	Yes
055	Window D03 Profile	Architectural	Echo Pacific Construction, Inc.	2/6/2014	2/17/2014	Yes
056	Window Fire Labelling	Architectural	Echo Pacific Construction, Inc.	2/6/2014	5/8/2014	Yes
057	Window Frames Glazing Stops at Exterior Locations	Architectural	Echo Pacific Construction, Inc.	2/13/2014	2/13/2014	Yes
058	Window Frames Glazing Thickness	Architectural	Echo Pacific Construction, Inc.	2/13/2014	4/21/2014	Yes
059	Door Swings	Architectural	Echo Pacific Construction, Inc.	2/13/2014	4/22/2014	Yes
060	Door Types 02 and 03 TS & LS Dimensions	Architectural	Echo Pacific Construction, Inc.	2/13/2014	4/22/2014	Yes
061	Structural/Architectural Steel Clarifications	Structural	Echo Pacific Construction, Inc.	2/12/2014	2/28/2014	Yes

RFI NO.	SUBJECT	DISCIPLINE	ORIGIN SOURCE	DATE SENT	DATE ANSWERED	POSTED TO DWGS
062	Structural/Architectural Steel Clarifications	Structural	Echo Pacific Construction, Inc.	2/12/2014	2/28/2014	Yes
063	Existing Storm Drain	Civil	Echo Pacific Construction, Inc.	2/12/2014	2/20/2014	Yes
064	Stiffening Plate/Erection Bolt	Structural	Echo Pacific Construction, Inc.	2/17/2014	2/20/2014	Yes
065	Tackboard/Schedule of Finishes	Architectural	Echo Pacific Construction, Inc.	2/19/2014	2/20/2014	Yes
066	Structural/Architectural Steel Clarifications	Structural	Echo Pacific Construction, Inc.	2/19/2014	2/27/2014	Yes
067	Shear Plate	Structural	Echo Pacific Construction, Inc.	2/25/2014	2/26/2014	Yes
068	Roof Deck Type Clarification	Structural	Echo Pacific Construction, Inc.	2/26/2014	2/27/2014	Yes
069	Shear Studs May Replace Welds	Structural	Echo Pacific Construction, Inc.	2/26/2014	2/27/2014	Yes
070	Attachment of Z Transition Plate	Structural	Echo Pacific Construction, Inc.	2/26/2014	2/27/2014	Yes
071	Bldg D Metal Deck Over Hangs	Architectural	Echo Pacific Construction, Inc.	2/26/2014	5/7/2014	Yes
072	Bldg C Walkway Dims	Architectural	Echo Pacific Construction, Inc.	2/26/2014	2/27/2014	Yes
073	Metal Deck Venting Requirements	Architectural	Echo Pacific Construction, Inc.	2/26/2014	1/28/2014	Yes
073-R1	Metal Deck Venting Requirements	Architectural	Echo Pacific Construction, Inc.	3/20/2014	4/22/2014	Yes
074	Typical Angle Brace Detail	Structural	Echo Pacific Construction, Inc.	2/26/2014	4/9/2014	Yes
075	Requested Framing at Building C	Structural	Echo Pacific Construction, Inc.	2/27/2014	4/22/2014	Yes
076	Deck Support at Depression	Structural	Echo Pacific Construction, Inc.	2/26/2014	3/18/2014	Yes
077	Edge of Deck at Open Meshing	Structural	Echo Pacific Construction, Inc.	2/27/2014	4/22/2014	Yes
078	Ceramic Tile Clarifications	Architectural	Echo Pacific Construction, Inc.	2/28/2014	5/7/2014	Yes
079	Canopy Base Plate Elevations	Structural	Echo Pacific Construction, Inc.	3/4/2014	3/13/2014	Yes
080	Structural Steel at Bldg B Roof	Structural	Echo Pacific Construction, Inc.	3/4/2014	3/14/2014	Yes
081	Brace Frame Rebar Attachment	Structural	Echo Pacific Construction, Inc.	3/4/2014	3/7/2014	Yes
082	Screen Wall Dimension	Structural	Echo Pacific Construction, Inc.	3/7/2014	3/14/2014	Yes

RFI NO.	SUBJECT	DISCIPLINE	ORIGIN SOURCE	DATE SENT	DATE ANSWERED	POSTED TO DWGS
083	Overhead Roll-Up Doors - Material Gage	Architectural	Echo Pacific Construction, Inc.	3/20/2014	3/20/2014	No
084	Overhead Colling Doors - Slat Width	Architectural	Echo Pacific Construction, Inc.	3/20/2014	5/6/2014	Yes
085	Channel Framing and HVAC Openings (Concrete-Infill Deck)	Structural	Echo Pacific Construction, Inc.	3/24/2014	3/25/2014	Yes
086	Channel Framing and HVAC Openings (Bare Decking)	Structural	Echo Pacific Construction, Inc.	3/24/2014	3/25/2014	Yes
087	Temp Power Conversion	Electrical	Echo Pacific Construction, Inc.	3/24/2014	4/8/2014	Yes
088	Relocation of Ladder Wall	Architectural	Echo Pacific Construction, Inc.	3/24/2014	3/25/2014	Yes
089	Wide Flange Column Block-Outs	Structural	Echo Pacific Construction, Inc.	3/26/2014	3/25/2014	Yes
089-R1	Wide Flange Column Block-Outs	Structural	Echo Pacific Construction, Inc.	3/25/2014	4/2/2014	Yes
090	VCT Color and Adhesive Clarifications	Architectural	Echo Pacific Construction, Inc.	4/2/2014	4/2/2014	Yes
091	Roof Screen Coating	Architectural	Echo Pacific Construction, Inc.	4/3/2014	4/21/2014	Yes
092	SCBF Sewer Penetrations	Plumbing	Echo Pacific Construction, Inc.	4/7/2014	4/22/2014	Yes
093	Communication Underground Conduit - Box size	Electrical	Echo Pacific Construction, Inc.	4/8/2014	4/21/2014	Yes
094	Roof Drains	Plumbing	Echo Pacific Construction, Inc.	4/8/2014	4/21/2014	Yes
095	Bldg B - Roof Drains	Plumbing	Echo Pacific Construction, Inc.	4/9/2014	4/21/2014	Yes
096	Panel MDF Location	Electrical	Echo Pacific Construction, Inc.	4/10/2014	4/17/2014	Yes
097	Bldg A Room 124 - Data at Floor Box	Electrical	Echo Pacific Construction, Inc.	4/9/2014	4/17/2014	Yes
098	Floor Box Covers in Kitchen Area	Electrical	Echo Pacific Construction, Inc.	4/10/2014	4/17/2014	Yes
099	Load Calculation for Main Switchboard MHS - CCD 006	Electrical	Echo Pacific Construction, Inc.	4/10/2014	4/23/2014	Yes
100	Building Distribution Frame	Electrical	Echo Pacific Construction, Inc.	4/14/2014	4/17/2014	Yes
101	Area of Repose at Utility Trenches	Structural	Echo Pacific Construction, Inc.	4/14/2014	4/17/2014	Yes
102	Wiring Device Identification Label	Electrical	Echo Pacific Construction, Inc.	4/17/2014	5/9/2014	Yes
103	Wiring Devices - Color Finish for Receptacles and Switches	Electrical	Echo Pacific Construction, Inc.	4/17/2014	4/22/2014	Yes

RFI NO.	SUBJECT	DISCIPLINE	ORIGIN SOURCE	DATE SENT	DATE ANSWERED	POSTED TO DWGS
104	Bldg. D Electrical Room	Electrical	Echo Pacific Construction, Inc.	4/17/2014	4/22/2014	Yes
105	Roof Drain POC - Bldg B	Plumbing	Echo Pacific Construction, Inc.	4/17/2014	4/17/2014	Yes
106	Underground Sewer	Plumbing	Echo Pacific Construction, Inc.	4/18/2014	5/2/2014	Yes
107	Roof Drain POC - Bldg A	Plumbing	Echo Pacific Construction, Inc.	4/17/2014	4/17/2014	Yes
108	Flange Extension - Bldg. B	Structural	Echo Pacific Construction, Inc.	4/17/2014	4/21/2014	Yes
109	Rebar at Base Revision	Structural	Echo Pacific Construction, Inc.	4/17/2014	4/17/2014	Yes
110	Bio Clean Interceptor	Plumbing	Echo Pacific Construction, Inc.	4/18/2014	5/6/2014	Yes
111	Building C - Roof Drain P.O.C.'s	Plumbing	Echo Pacific Construction, Inc.	4/23/2014	5/9/2014	Yes
112	Floor Sink Clarifications	Plumbing	Echo Pacific Construction, Inc.	4/24/2014	5/2/2014	Yes
114	Typical Blockouts	Structural	Echo Pacific Construction, Inc.	4/25/2014	4/28/2014	Yes
115	Alternate Routing of Underground Feeders to Bldg D	Electrical	Echo Pacific Construction, Inc.	4/25/2014	4/25/2014	Yes
116	Floor Box-Buildign C	Electrical	Echo Pacific Construction, Inc.	4/25/2014	5/2/2014	Yes
117	Encasement of Underground Runs	Electrical	Echo Pacific Construction, Inc.	4/25/2014	5/2/2014	Yes
118	VOID - Pull Box Locations	Electrical	Echo Pacific Construction, Inc.	4/29/2014	5/2/2014	Yes
119	Low Voltage Rough-In	Telecommunications & Data	Echo Pacific Construction, Inc.	4/30/2014	5/9/2014	Yes
120	Missing Bent Plate where HSS 5 X 5 Columns occur	Structural	Echo Pacific Construction, Inc.	4/30/2014	5/7/2014	Yes
121	Communications Underground Conduits	Electrical	Echo Pacific Construction, Inc.	5/2/2014	5/14/2014	Yes
122	Bldg C - Missing Restroom Dimensions	Plumbing	Echo Pacific Construction, Inc.	5/2/2014	5/8/2014	Yes
123	Bldg B - Dimension Clarification	Electrical	Echo Pacific Construction, Inc.	5/2/2014	5/8/2014	Yes
124	Lightweight Concrete Decks - Bldgs A, & C second floor & Roof	Structural	Echo Pacific Construction, Inc.	5/13/2014	6/2/2014	Yes
125	Bldg C - Stem Wall Reinforcing	Structural	Echo Pacific Construction, Inc.	5/13/2014	5/19/2014	Yes
126	Bldg A HSS Column	Structural	Echo Pacific Construction, Inc.	5/14/2014	5/19/2014	Yes

RFI NO.	SUBJECT	DISCIPLINE	ORIGIN SOURCE	DATE SENT	DATE ANSWERED	POSTED TO DWGS
127	Bldg C 4" Concrete Topping	Structural	Echo Pacific Construction, Inc.	5/14/2014	6/2/2014	Yes
128	Use of 1/2" flex on fixtures & Combination Fire Smoke Dampers	Electrical	Echo Pacific Construction, Inc.	5/14/2014	6/2/2014	Yes
129	HSS Brace Unable to Install	Structural	Echo Pacific Construction, Inc.	5/16/2014	5/19/2014	Yes
130	Exterior Gypsum Sheathing	Architectural	Echo Pacific Construction, Inc.	5/16/2014	5/19/2014	Yes
131	Edge of deck @ Interior Edges - Bldg B	Architectural	Echo Pacific Construction, Inc.	5/16/2014	5/19/2014	Yes
132	Finish to Shaftwall	Architectural	Echo Pacific Construction, Inc.	5/16/2014	5/19/2014	Yes
133	Cantilever at Stage	Architectural	Echo Pacific Construction, Inc.	5/16/2014	5/19/2014	Yes
134	Bldg B 2nd Floor Lighting	Electrical	Echo Pacific Construction, Inc.	5/16/2014	6/2/2014	Yes
135	Bldg B 1st Floor Lighting	Electrical	Echo Pacific Construction, Inc.	5/16/2014	6/2/2014	Yes
136	Bldg A, 1st Floor Light Fixtures	Electrical	Echo Pacific Construction, Inc.	5/16/2014	6/2/2014	Yes
137	Future Communication & Power	Electrical	Echo Pacific Construction, Inc.	5/16/2014	6/2/2014	Yes
138	Deck Support at Depression - Bldg B	Structural	Echo Pacific Construction, Inc.	5/19/2014	5/19/2014	No
139	Heat Detector Clarification	Architectural	Echo Pacific Construction, Inc.	5/19/2014	6/2/2014	Yes
140	Horn Strobe Clarification	Architectural	Echo Pacific Construction, Inc.	5/19/2014	6/17/2014	Yes
141	Fire Alarm System Network	Fire Alarm	Echo Pacific Construction, Inc.	5/19/2014	6/2/2014	Yes
142	Basket Tray Sleeves - Bldg B	Electrical	Echo Pacific Construction, Inc.	5/19/2014	6/2/2014	Yes
143	Fixture Type G	Electrical	Echo Pacific Construction, Inc.	5/19/2014	6/2/2014	Yes
144	Exterior Lighting Inverter Circuits	Electrical	Echo Pacific Construction, Inc.	5/19/2014	6/2/2014	Yes
145	Seatwalls @ Canopy	Architectural	Echo Pacific Construction, Inc.	5/19/2014	5/21/2014	Yes
146	Drop Off Overhead Canopy	Structural	Echo Pacific Construction, Inc.	5/19/2014	5/21/2014	Yes
147	Hardscape Soil Prep	Civil	Echo Pacific Construction, Inc.	5/19/2014	5/21/2014	Yes
148	Existing Lawn	Landscape	Echo Pacific Construction, Inc.	5/19/2014	5/21/2014	Yes

RFI NO.	SUBJECT	DISCIPLINE	ORIGIN SOURCE	DATE SENT	DATE ANSWERED	POSTED TO DWGS
149	Modulars @ Drop Off	Architectural	Echo Pacific Construction, Inc.	5/19/2014	5/21/2014	Yes
150	Site Lighting Voltage Drop	Electrical	Echo Pacific Construction, Inc.	5/19/2014	6/2/2014	Yes
151	Lighting Inverter	Electrical	Echo Pacific Construction, Inc.	5/19/2014	6/2/2014	Yes
152	Bldg C Lighting	Electrical	Echo Pacific Construction, Inc.	5/19/2014	6/2/2014	Yes
153	Bldg D Lighting	Electrical	Echo Pacific Construction, Inc.	5/19/2014	6/2/2014	Yes
154	Flag Pole Up Lights	Electrical	Echo Pacific Construction, Inc.	5/19/2014	6/2/2014	Yes
155	Communications CMH 4 and CMH 5	Electrical	Echo Pacific Construction, Inc.	5/23/2014	6/11/2014	Yes
156	Dimensions Needed Building A	Electrical	Echo Pacific Construction, Inc.	5/23/2014	6/4/2014	Yes
157	Curian Wall & Storefront Finish Clarification	Architectural	Echo Pacific Construction, Inc.	5/27/2014	5/27/2014	Yes
158	Bldg A Wall Locations @ 2nd Floor	Structural	Echo Pacific Construction, Inc.	5/27/2014	6/2/2014	Yes
159	Canopy & Masonry Over-E	Civil	Echo Pacific Construction, Inc.	5/28/2014	6/10/2014	Yes
160	Communication 3R Pull Box Sizing	Electrical	Echo Pacific Construction, Inc.	5/28/2014	6/6/2014	Yes
161	Building A Floor Box Placement	Electrical	Echo Pacific Construction, Inc.	5/28/2014	6/11/2014	Yes
162	Roof Hatch @ Bldg B	Architectural	Echo Pacific Construction, Inc.	5/28/2014	6/2/2014	Yes
163	Fire Alarm and Comm. Wiring in Nema 3R Pull	Electrical	Echo Pacific Construction, Inc.	5/28/2014	6/17/2014	No
164	Major Stage Clarification	Structural	Echo Pacific Construction, Inc.	6/3/2014	6/11/2014	Yes
165	Interior Drywall Control Joint Locations	Architectural	Echo Pacific Construction, Inc.	6/4/2014	6/5/2014	Yes
166	Drywall Clarification	Architectural	Echo Pacific Construction, Inc.	6/4/2014	6/5/2014	Yes
167	Drywall on Wall Types B	Architectural	Echo Pacific Construction, Inc.	6/4/2014	6/5/2014	Yes
168	Stair Pony Walls	Architectural	Echo Pacific Construction, Inc.	6/4/2014	6/5/2014	Yes
169	Over Spanned Roof Deck	Architectural	Echo Pacific Construction, Inc.	6/5/2014	6/5/2014	Yes
170	Type G Fixture Catalog Number	Electrical	Echo Pacific Construction, Inc.	6/5/2014	6/5/2014	No

RFI NO.	SUBJECT	DISCIPLINE	ORIGIN SOURCE	DATE SENT	DATE ANSWERED	POSTED TO DWGS
171	Existing Metered Dist. Board DB-B	Electrical	Echo Pacific Construction, Inc.	6/5/2014	6/17/2014	Yes
172	Fire Alarm System	Fire Alarm	Echo Pacific Construction, Inc.	6/6/2014	6/17/2014	Yes
173	Fire Alarm System Clarifications	Fire Alarm	Echo Pacific Construction, Inc.	6/10/2014	6/17/2014	Yes
174	Modular Elevator - 1	Electrical	Echo Pacific Construction, Inc.	6/12/2014	6/12/2014	Yes
174-R1	Modular Elevator - 1	Electrical	Echo Pacific Construction, Inc.	6/12/2014		No
175	Nogales High School Sign (SK-59)	Structural	Echo Pacific Construction, Inc.	6/11/2014		No
176	Aluminum Panel Clarification	Structural	Echo Pacific Construction, Inc.	6/11/2014	6/17/2014	Yes
177	Moment Beam Clarification (SK-54)	Structural	Echo Pacific Construction, Inc.	6/11/2014	6/23/2014	Yes
178	Full Depth Stiffener Plates (SK-53)	Structural	Echo Pacific Construction, Inc.	6/11/2014	6/23/2014	Yes
179	Drag Beam Connection Detail (SK-52)	Structural	Echo Pacific Construction, Inc.	6/11/2014	6/23/2014	Yes
180	Concrete Mix Design Approval	Electrical	Echo Pacific Construction, Inc.	6/12/2014	6/17/2014	Yes
181	Drift Clips	Structural	Echo Pacific Construction, Inc.	6/18/2014		No
182	Missing Retaining Wall	Civil	Echo Pacific Construction, Inc.	6/19/2014		No
183	Canopy Clarification	Structural	Echo Pacific Construction, Inc.	6/19/2014		No
184	Building D Dimensions	Structural	Echo Pacific Construction, Inc.	6/19/2014	6/20/2014	Yes
185	Utility Trench Doweling Requirements	Structural	Echo Pacific Construction, Inc.	6/19/2014	6/19/2014	Yes
186	Type S1 Wall Rating	Architectural	Echo Pacific Construction, Inc.	6/23/2014	6/23/2014	Yes
187	Bldg B - Missing Dimensions	Architectural	Echo Pacific Construction, Inc.	6/23/2014		No
188	Alternative Electrical Underground Routing	Electrical	Echo Pacific Construction, Inc.	6/27/2014	6/30/2014	Yes
189	Bldg F - Electrical Room Door	Civil	Echo Pacific Construction, Inc.	6/24/2014		No
190	Missing Interior Elevations - Bldg A & B	Architectural	Echo Pacific Construction, Inc.	6/25/2014		No
191	Deck Support at Soffit Penetration	Structural	Echo Pacific Construction, Inc.	6/25/2014		No

RFI NO.	SUBJECT	DISCIPLINE	ORIGIN SOURCE	DATE SENT	DATE ANSWERED	POSTED TO DWGS
192	Bldg. A Brace Frame	Structural	Echo Pacific Construction, Inc.	6/25/2014	6/26/2014	Yes
192-R1	Bldg. A Brace Frame	Structural	Echo Pacific Construction, Inc.	6/25/2014		No
193	Aluminum Perforated Panels	Structural	Echo Pacific Construction, Inc.	6/25/2014		No
194	FA System Clarifications - 2	Fire Alarm	Echo Pacific Construction, Inc.	6/26/2014		No
195	Bldg D - Roof Framing Plan		Echo Pacific Construction, Inc.	6/27/2014		No
DE-001	Box Culvert at New Utilities	Civil	Dominguez General Engineering, Inc.	3/13/2014	3/19/2014	Yes





**BERNARDS**  
BUILDERS • MANAGEMENT SERVICES

# NJGALES HIGH SCHOOL REVIVAL PROJECT

## Construction Change Directive Tracking Log

Construction Change Directive	Date	Description of Work	Associated Documents	Associated PCO	DSA Review Status
CCD-B-001	2/12/2014	Make revisions to various civil details per attached revised sheets PA2.01, C-3, C-4, C-5, C-6, C-7, C-8 and C-12	RFI #s 020, 023 (partial), 047, 048 and 063	PCO 002	N/A
CCD-B-002	1/22/2014	Provide power to doors C104-2 and D104-2 per revised sheets E5.04, E5.05, EC3.01 and ED4.01	RFI #006	PCO 010	N/A
CCD-B-003	2/4/2014	Architectural clarifications per attached sheets EA1.02 and EC3.00 and attached sketches CCD3-1 and CCD3-2	CR Comments	PCO 015	N/A
CCD-A-004	3/11/2014	Bldg A corner footing	RFI #023	PCO 002	Approved
CCD-A-005	3/11/2014	Retaining wall at Bldg A corner (ref CCD-004)	RFI #023	PCO 002	Approved
CCD-A-006	3/4/2014	Campus wide electrical conversion to 480v		PCO 017	In Review
CCD-A-007		Revised Roof Curbs for HVAC Units			Not Submitted Yet
CCD-B-008	5/14/2014	Relocated Trash & Electrical Enclosure, revised roll-up door and revised landscaping at trash enclosure			N/A
CCD-B-009	5/27/2014	Revised AV System Layout @ Bldgs A&B	Submittal #98	PCO 35	N/A
CCD-A-010	5/8/2014	Storm Drain POC, Grading at Parking Lot for relocated trash enclosure and routing of sewer system			In Review
CCD-A-011	6/3/2014	Clarification of Footing Types & Dimensions	Addendum 1		In Review